

**PROFESSIONAL OFFICE SPACE**

**Property Highlights**

- Class "A", two story garden office complex with Oracle Road frontage
- Covered parking available
- Building signage available
- On-site management
- On-site childcare available
- Location convenient to other professional services, retail, lodging, fitness center, and restaurants

**Property Features**

Available	Suite 103 – 1,256 SF
Lease Rate	\$22.00 per SF
Lease Type	Modified Gross
Possession	Immediate



For more information, please contact:

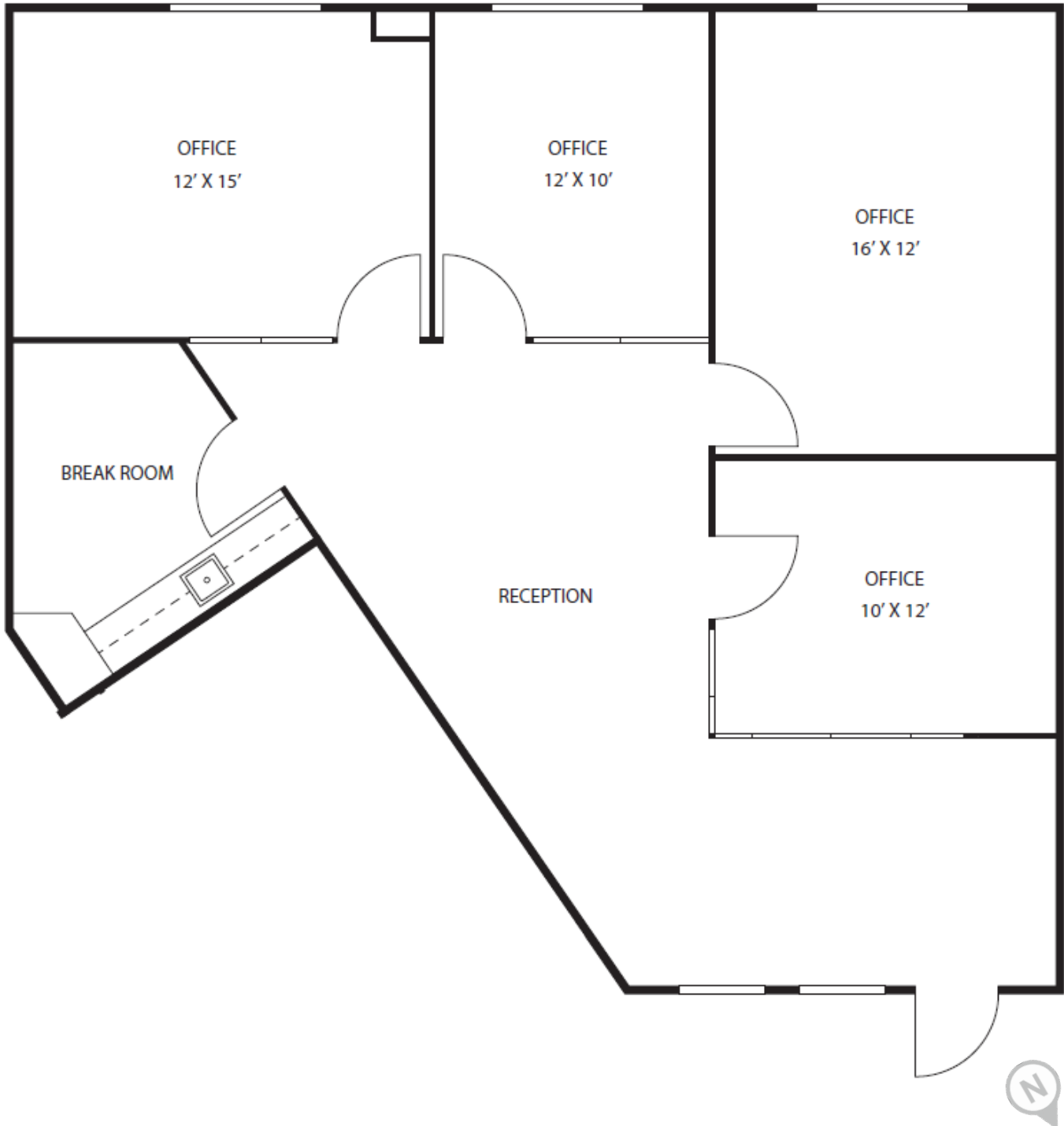
**Thomas J. Nieman**  
**Office Properties**  
 +1 520 546 2728  
[tنيeman@picor.com](mailto:tنيeman@picor.com)

**PICOR Commercial Real Estate Services**  
 5151 E. Broadway Blvd, Suite 115  
 Tucson, Arizona 85711  
 phone: +1 520 748 7100  
[picor.com](http://picor.com)

PROFESSIONAL OFFICE SPACE

Floor Plan - Suite 103

1,256 SF



Property Photos



*Independently Owned and Operated / A Member of the Cushman & Wakefield Alliance*

Cushman & Wakefield Copyright 2021. No warranty or representation, express or implied, is made to the accuracy or completeness of the information contained herein, and same is submitted subject to errors, omissions, change of price, rental or other conditions, withdrawal without notice, and to any special listing conditions imposed by the property owner(s). As applicable, we make no representation as to the condition of the property (or properties) in question.

10/23/2024



FOR LEASE

# PUSCH RIDGE CENTRE

10371 N. Oracle Road

Oro Valley, AZ 85737



For more information, contact:

**Thomas J. Nieman**  
 Office Properties  
 +1 520 546 2728  
[tnieman@picor.com](mailto:tnieman@picor.com)

**PICOR Commercial Real Estate Services**  
 5151 E. Broadway Blvd, Suite 115  
 Tucson, Arizona 85711  
 phone: +1 520 748 7100  
[picor.com](http://picor.com)

Independently Owned and Operated / A Member of the Cushman & Wakefield Alliance  
 Cushman & Wakefield Copyright 2019. No warranty or representation, express or implied, is made to the accuracy or completeness of the information contained herein, and same is submitted subject to errors, omissions, change of price, rental or other conditions, withdrawal without notice, and to any special listing conditions imposed by the property owner(s). As applicable, we make no representation as to the condition of the property (or properties) in question. 10/23/2024

