

# CONTINENTAL PLAZA

6135 – 6179 E Broadway Blvd. | Tucson, AZ 85711

CUSHMAN & WAKEFIELD

PICOR

FOR LEASE

SUBJECT



# CONTINENTAL PLAZA

6135 – 6179 E Broadway Blvd. | Tucson, AZ 85711



## PROPERTY DETAILS

Available	4,525 SF	<a href="#">CLICK TO VIEW VIRTUAL TOUR</a>
Lease Rate	Contact Agent	
NNN Rate	Est. \$6.00/SF	
Zoning	C-1, City of Tucson	
Address	6135 – 6179 E Broadway Blvd.	

## HIGHLIGHTS

- Situated on highly trafficked Broadway Blvd across from Park Place Mall
- Located in one of Tucson’s major retail districts and surrounded by high-demand shopping and dining options
- Monument signage opportunity along busy Broadway Blvd
- Dense central area with over 125,000 people within 3 miles of site

## TRAFFIC COUNTS

Broadway Blvd	41,217 VPD (2023)
Wilmot Rd	35,986 VPD (2023)

## DEMOGRAPHICS

	Population	Average Household Income	Daytime Population
1 Mile	11,897	\$85,687	8,685
3 Miles	126,476	\$81,940	57,581
5 Miles	257,892	\$91,233	102,474

**Dave Hammack** / Principal / [dhammack@picor.com](mailto:dhammack@picor.com) / +1 520 546 2712  
**Aaron LaPrise** / Principal / [alaprise@picor.com](mailto:alaprise@picor.com) / +1 520 546 2770

*Independently Owned and Operated / A Member of the Cushman & Wakefield Alliance*  
 11/1/2024

Cushman & Wakefield Copyright 2022. No warranty or representation, express or implied, is made to the accuracy or completeness of the information contained herein, and same is submitted subject to errors, omissions, change of price, rental or other conditions, withdrawal without notice, and to any special listing conditions imposed by the property owner(s). As applicable, we make no representation as to the condition of the property (or properties) in question.

# CONTINENTAL PLAZA

6135 – 6179 E Broadway Blvd. | Tucson, AZ

## SITE PLAN



Broadway Blvd 41,217 VPD (2023)



Dave Hammack / Principal / [dhammack@picor.com](mailto:dhammack@picor.com) / +1 520 546 2712  
Aaron LaPrise / Principal / [alaprise@picor.com](mailto:alaprise@picor.com) / +1 520 546 2770

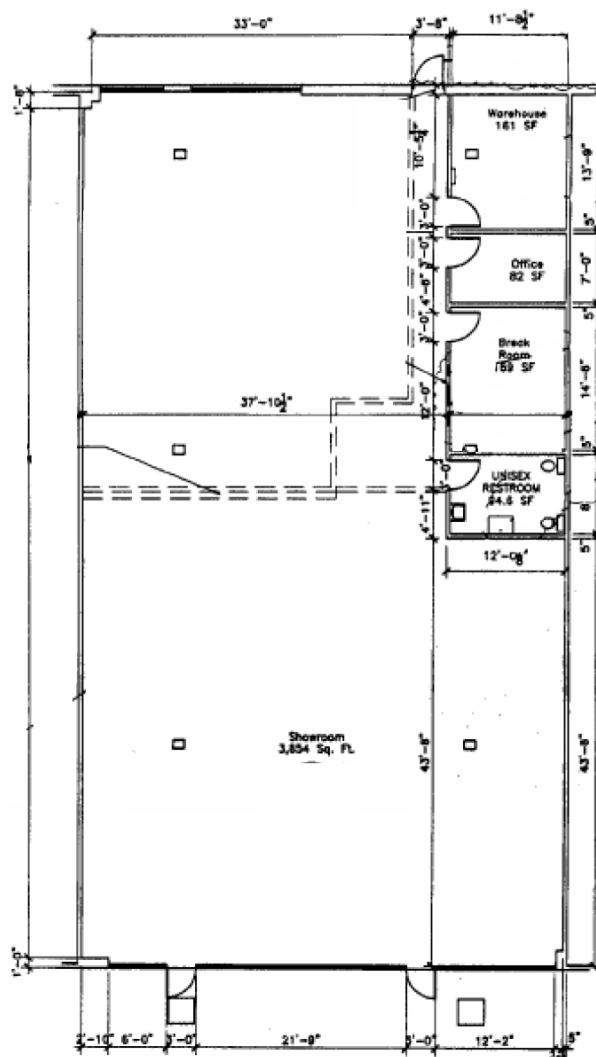
*Independently Owned and Operated / A Member of the Cushman & Wakefield Alliance*  
11/1/2024

Cushman & Wakefield Copyright 2022. No warranty or representation, express or implied, is made to the accuracy or completeness of the information contained herein, and same is submitted subject to errors, omissions, change of price, rental or other conditions, withdrawal without notice, and to any special listing conditions imposed by the property owner(s). As applicable, we make no representation as to the condition of the property (or properties) in question.

# CONTINENTAL PLAZA

6135 – 6179 E Broadway Blvd. | Tucson, AZ

## FLOOR PLAN



[CLICK TO VIEW VIRTUAL TOUR](#)

Dave Hammack / Principal / [dhammack@picor.com](mailto:dhammack@picor.com) / +1 520 546 2712  
Aaron LaPrise / Principal / [alaprise@picor.com](mailto:alaprise@picor.com) / +1 520 546 2770

*Independently Owned and Operated / A Member of the Cushman & Wakefield Alliance*  
11/1/2024

Cushman & Wakefield Copyright 2022. No warranty or representation, express or implied, is made to the accuracy or completeness of the information contained herein, and same is submitted subject to errors, omissions, change of price, rental or other conditions, withdrawal without notice, and to any special listing conditions imposed by the property owner(s). As applicable, we make no representation as to the condition of the property (or properties) in question.

# CONTINENTAL PLAZA

6135 – 6179 E Broadway Blvd. | Tucson, AZ 85711

CUSHMAN & WAKEFIELD

PICOR

## AERIAL



Dave Hammack / Principal / [dhammack@picor.com](mailto:dhammack@picor.com) / +1 520 546 2712  
Aaron LaPrise / Principal / [alaprise@picor.com](mailto:alaprise@picor.com) / +1 520 546 2770

Independently Owned and Operated / A Member of the Cushman & Wakefield Alliance  
11/1/2024

Cushman & Wakefield Copyright 2022. No warranty or representation, express or implied, is made to the accuracy or completeness of the information contained herein, and same is submitted subject to errors, omissions, change of price, rental or other conditions, withdrawal without notice, and to any special listing conditions imposed by the property owner(s). As applicable, we make no representation as to the condition of the property (or properties) in question.

# CONTINENTAL PLAZA

6135 – 6179 E Broadway Blvd. | Tucson, AZ 85711

CUSHMAN & WAKEFIELD

PICOR

