

INDUSTRIAL

Property Details

Available	± 15,000 SF (±12,000 Warehouse & ±3,000 SF Office Space)
Suite	1135 E. Palmdale
Lease Rate	\$0.65/ SF MG
Column Spacing	31' X 40'
Clear Height	18'
Loading	2 dock, 1 grade
Power	2400 AMP, 3 PH, 480 V
Sprinkled	Yes

15,000 SF Industrial Space
Lease Rate: \$0.65/ SF MG

Property Description

This Industrial Property is well-located in the heart of Tucson's Industrial epicentre and is within close proximity to I-10. It features a high-quality office build-out and concrete tilt construction and a private fenced yard.

****Pallet Racking in Warehouse INCLUDED**

Brandon Rodgers, SIOR, CCIM
Principal, Industrial or Commercial Properties
+1 520 546 2714
brodgers@picor.com

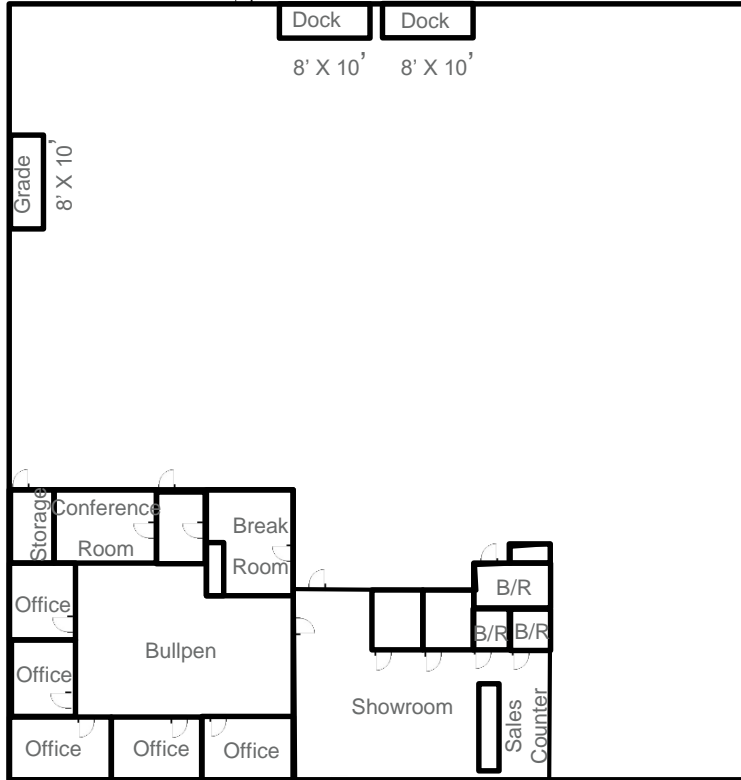
PICOR Commercial Real Estate Services
5151 E. Broadway Blvd, Suite 115
Tucson, Arizona 85711
phone: +1 520 748 7100
picor.com

Independently Owned and Operated / A Member of the Cushman & Wakefield Alliance

Cushman & Wakefield Copyright 2020. No warranty or representation, express or implied, is made to the accuracy or completeness of the information contained herein, and same is submitted subject to errors, omissions, change of price, rental or other conditions, withdrawal without notice, and to any special listing conditions imposed by the property owner(s). As applicable, we make no representation as to the condition of the property (or properties) in question.

10/29/2020

Floor Plan



*Not to scale



Brandon Rodgers, SIOR, CCIM
Principal, Industrial or Commercial Properties
+1 520 546 2714
brodgers@picor.com

PICOR Commercial Real Estate Services
5151 E. Broadway Blvd, Suite 115
Tucson, Arizona 85711
phone: +1 520 748 7100
picor.com

Independently Owned and Operated / A Member of the Cushman & Wakefield Alliance

Cushman & Wakefield Copyright 2020. No warranty or representation, express or implied, is made to the accuracy or completeness of the information contained herein, and same is submitted subject to errors, omissions, change of price, rental or other conditions, withdrawal without notice, and to any special listing conditions imposed by the property owner(s). As applicable, we make no representation as to the condition of the property (or properties) in question.

10/29/2020