



DENTAL OFFICE

2,275 SF Centrally Located Office Space
Lease Rate: \$14.50/SF MG

Property Highlights

- Close to Pima Medical Institute, St. Joseph's Hospital and Tucson Medical Center
- Central location on 5th Street, near The Williams Center and Park Place Mall
- Multi-tenanted office, dental and medical property
- On a bus route



Property Details		Lease Rate
Available	5727 - 2,275 SF	\$14.50 MG
Tax Parcel No.	127-03-523B	
Building Size	12,290 SF	
Parcel Size	43,066 SF	
Zoning	O-3	
Parking	60 uncovered for customers/ 20 covered reserved for Tenants	
Year Built	1971 & 1972	

For more information, please contact:

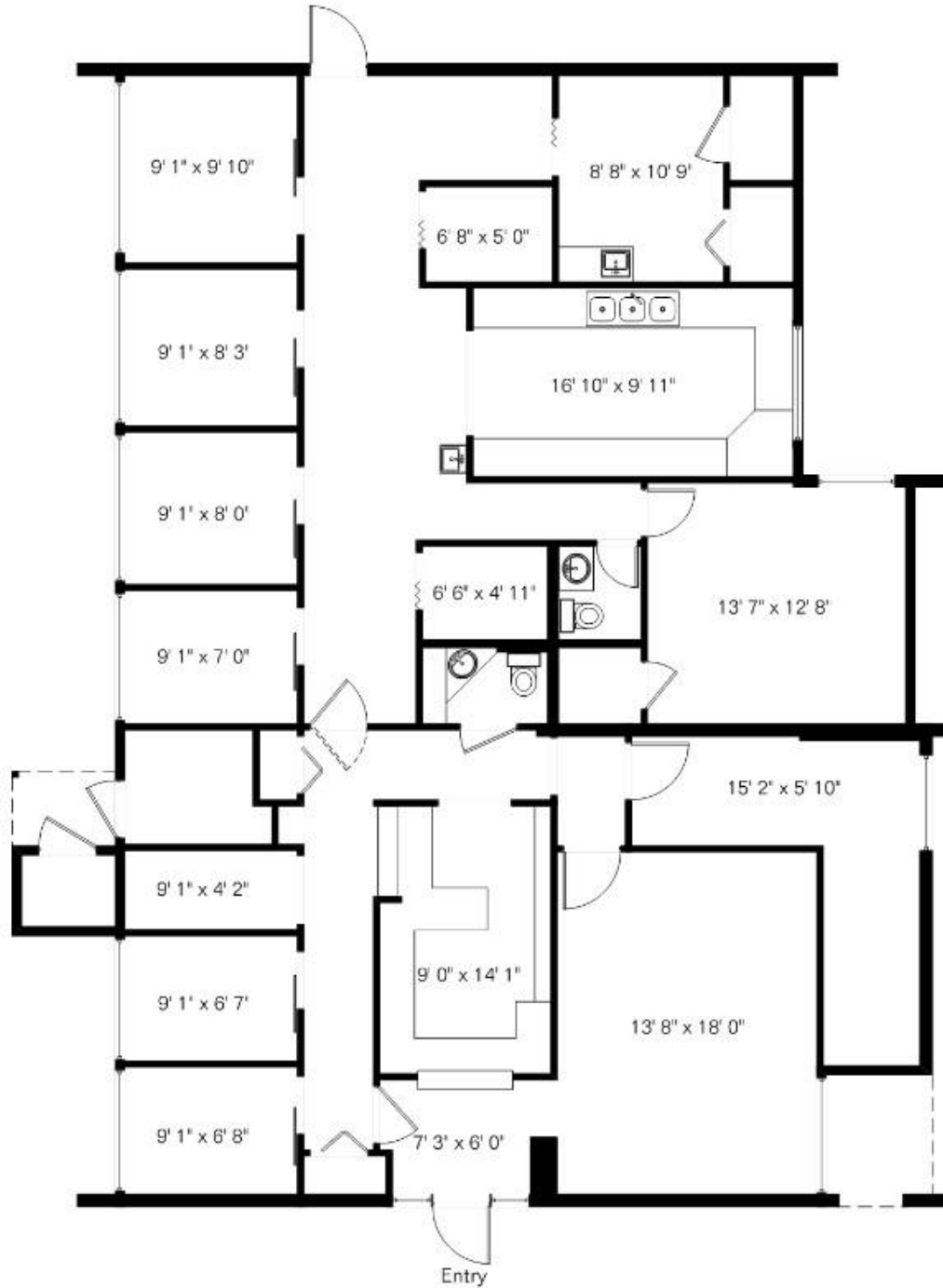
Ryan McGregor
Office Properties
 +1 520 546 2748
 rmcgregor@picor.com

Molly Mary Gilbert
Office Properties
 +1 520 546 2766
 mgilbert@picor.com

PICOR Commercial Real Estate Services
 5151 E. Broadway Blvd, Suite 115
 Tucson, Arizona 85711
 phone: +1 520 748 7100
 picor.com

Floor Plan

5727- 2,275 SF

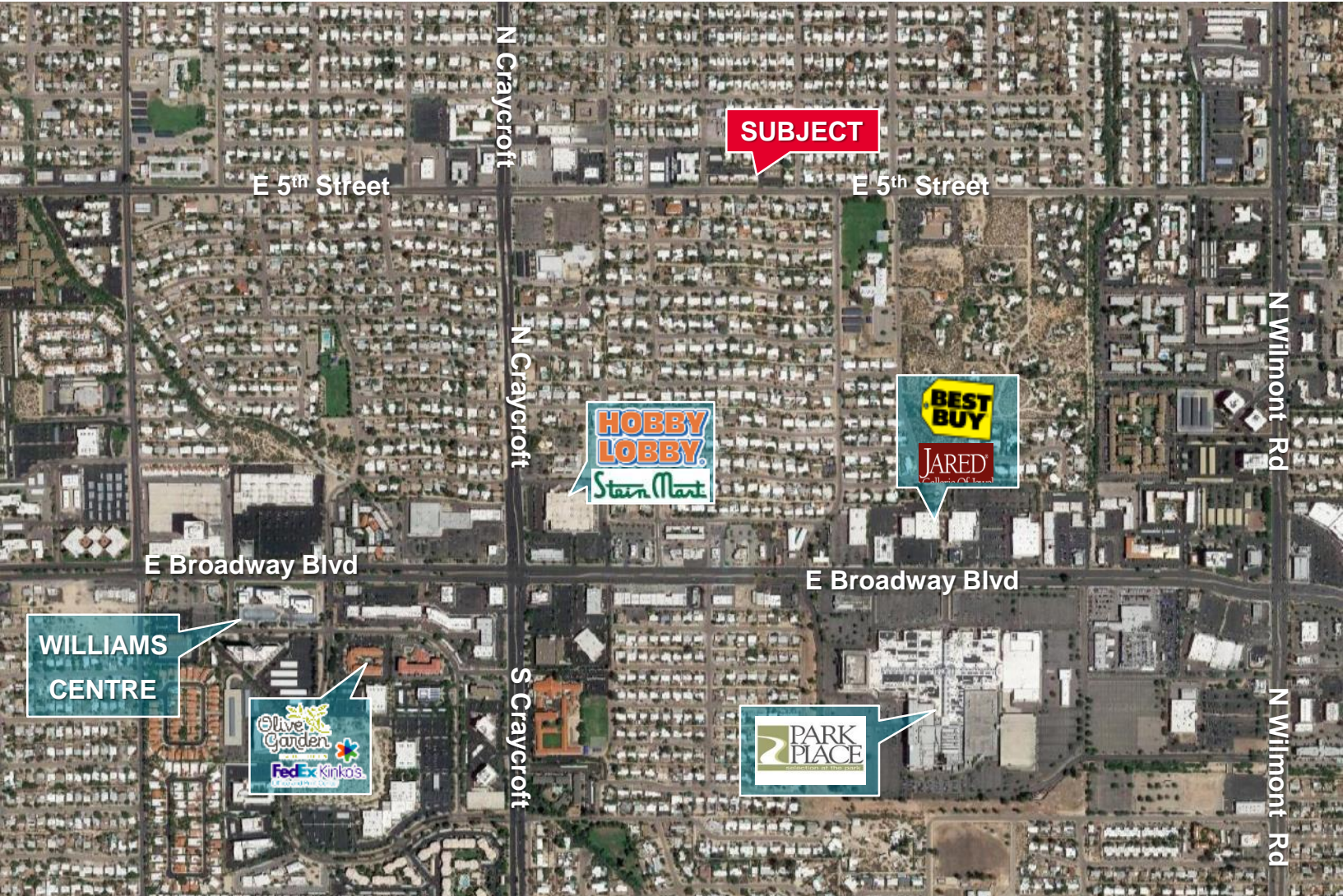


Ryan McGregor
Office Properties
+1 520 546 2748
rmcgregor@picor.com

Molly Mary Gilbert
Office Properties
+1 520 546 2766
mjilbert@picor.com

PICOR Commercial Real Estate Services
5151 E. Broadway Blvd, Suite 115
Tucson, Arizona 85711
phone: +1 520 748 7100
picor.com

Aerial



Ryan McGregor
Office Properties
+1 520 546 2748
rmcgregor@picor.com

Molly Mary Gilbert
Office Properties
+1 520 546 2766
mgilbert@picor.com

PICOR Commercial Real Estate Services
5151 E. Broadway Blvd, Suite 115
Tucson, Arizona 85711
phone: +1 520 748 7100
picor.com

Independently Owned and Operated / A Member of the Cushman & Wakefield Alliance

Cushman & Wakefield Copyright 2020. No warranty or representation, express or implied, is made to the accuracy or completeness of the information contained herein, and same is submitted subject to errors, omissions, change of price, rental or other conditions, withdrawal without notice, and to any special listing conditions imposed by the property owner(s). As applicable, we make no representation as to the condition of the property (or properties) in question.

3/28/2021