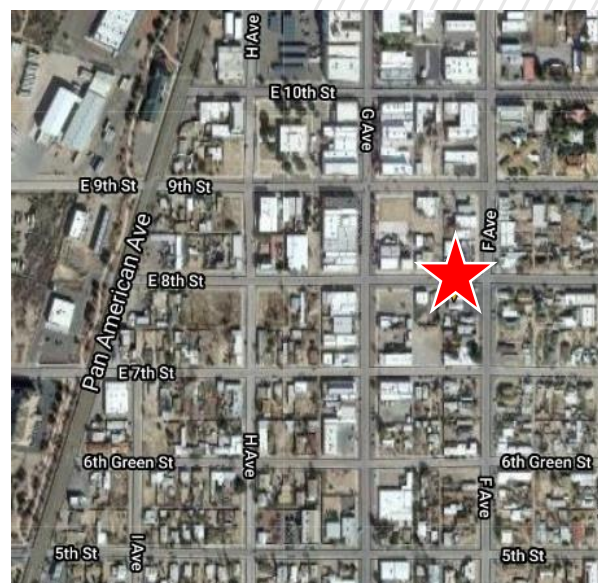


**FOR SALE**
**730 N. F Avenue  
Douglas, AZ 85607**

**PROPERTY HIGHLIGHTS**

- Freestanding identity
- Abundant parking
- High traffic counts
- Strong daytime employment
- Dense population in area

<b>BUILDING SF</b>	3,485	<b>SIGNAGE TYPE</b>	Pole
<b>LAND SF</b>	10,019	<b>1-MILE (POP.)</b>	8,273
<b>YEAR BUILT</b>	1965	<b>3-MILE (POP.)</b>	19,040
<b>PARKING</b>	3.82/1000 SF	<b>MED. INCOME</b>	\$34,581 (1-MI)
<b>TRAFFIC COUNTS</b>	2,077 VPD	<b>SPACE USE</b>	Retail / Office



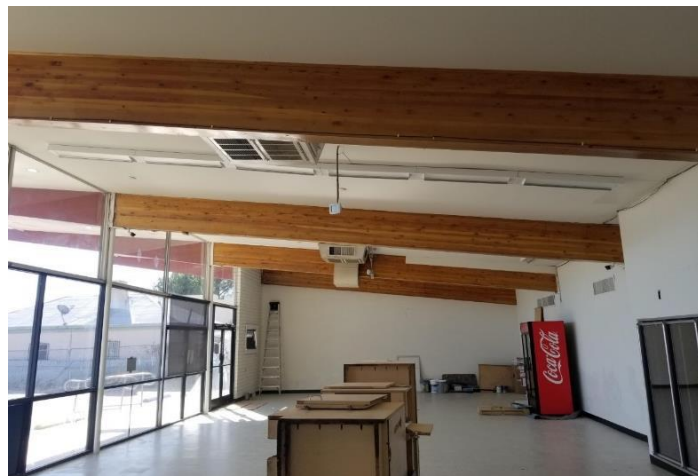
**SHER FRENCH**  
Account Director  
+1 314 391 2980  
sher.french@cushwake.com

**TUCSON CONTACT**  
**GREG FURRIER**  
Principal  
+1 520 909 6111  
gfurrier@picor.com

**TUCSON CONTACT**  
**ROB TOMLINSON**  
Principal  
+1 520 546 2757  
rtomlinson@picor.com

**FOR SALE**

730 N. F Avenue  
Douglas, AZ 85607

**LEGAL INFORMATION**

<b>TAX PARCEL ID</b>	409-08-178A
<b>2020 RE TAXES</b>	\$267.08
<b>ZONING</b>	Commercial

**RESTRICTIONS**

Property will be restricted against uses competitive with convenience stores

**OFFERING PROCESS**

Seller will consider the submission of an offer using Seller's Letter of Intent form, which will be provided to qualified buyers. Interested parties should submit an LOI on terms where the Buyer agrees to complete a purchase of the property on the Seller's Real Estate Sales Agreement. All offers must be received by Exclusive Agent, Cushman & Wakefield. Contact information is below:

**SHER FRENCH**

Account Director  
+1 314 391 2980  
sher.french@cushwake.com

**TUCSON CONTACT****GREG FURRIER**

Principal  
+1 520 909 6111  
gfurrier@picor.com

**TUCSON CONTACT****ROB TOMLINSON**

Principal  
+1 520 546 2757  
rtomlinson@picor.com