

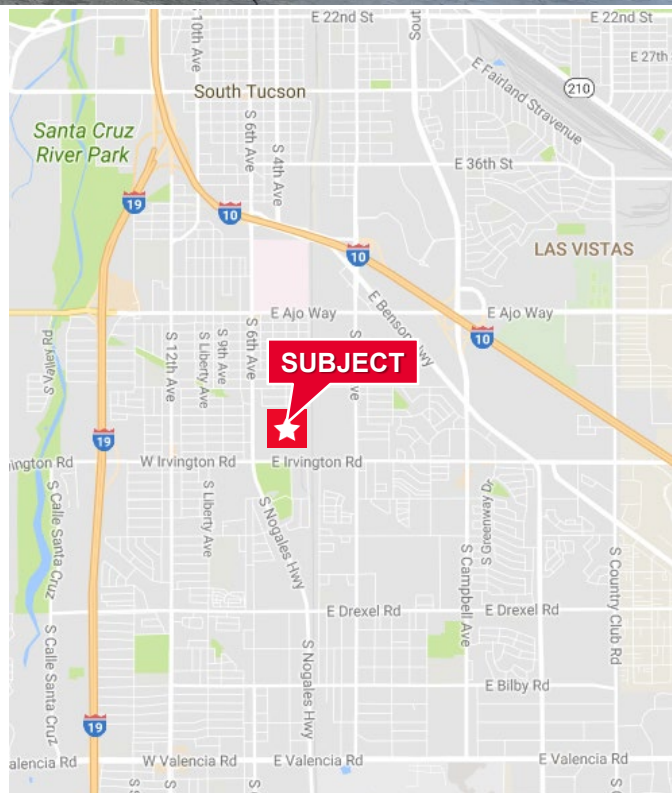


285 E. Missouri Street
Tucson, Arizona 85714



- Great Location
- Unique Property
- 2.58 Acres fenced property
- Immediate Possession
- * Adjacent land parcel available

Warehouse Size	5,000 SF
Office Size	1,275 SF
Parcel Size	2.58 Acres
Assessor Parcel No.	120-09-3140
Construction	Metal
Clear Height	16 ft
Loading	17 docks + 1 ramp
Zoning	C-2, City of Tucson
Power	100 Amps
Year Built	1990
Sprinkler	Yes
Parking	Ample



PICOR Commercial Real Estate Services
5151 E. Broadway Blvd, Suite 115
Tucson, Arizona 85711
phone: +1 520 748 7100
picor.com

Independently Owned and Operated / A Member of the Cushman & Wakefield Alliance

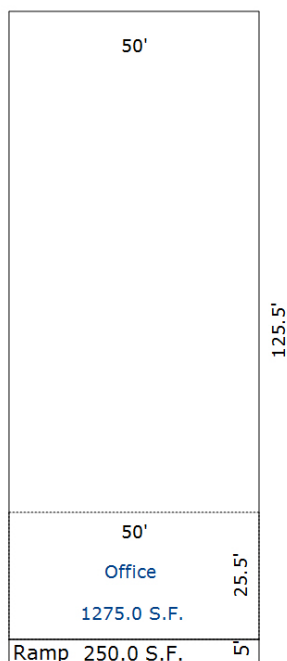
Cushman & Wakefield Copyright 2022. No warranty or representation, express or implied, is made to the accuracy or completeness of the information contained herein, and same is submitted subject to errors, omissions, change of price, rental or other conditions, withdrawal without notice, and to any special listing conditions imposed by the property owner(s). As applicable, we make no representation as to the condition of the property (or properties) in question. 4/7/2022

4/7/2022

Floor Plan

DESCRIPTION TEXT

120-09-3140
285 E MISSOURI ST



TOTAL SQ FT 6275

#407 08/2017
DRAWN FROM PRO

For more information, please contact:

Cintya Denisse Angulo Garcia
Commercial Properties
+1 520 546 2736
dangulo@picor.com

PICOR Commercial Real Estate Services
5151 E. Broadway Blvd, Suite 115
Tucson, Arizona 85711
phone: +1 520 748 7100
picor.com

Independently Owned and Operated / A Member of the Cushman & Wakefield Alliance
Cushman & Wakefield Copyright 2022. No warranty or representation, express or implied, is made to the accuracy or completeness of the information contained herein, and same is submitted subject to errors, omissions, change of price, rental or other conditions, withdrawal without notice, and to any special listing conditions imposed by the property owner(s). As applicable, we make no representation as to the condition of the property (or properties) in question. 4/7/2022







Warehouse



Office



Dock Loading



Dock & Ramp Loading