

**OFFICE / MEDICAL**



**622 SF – 2,051 SF Available**  
**Lease Rate: \$18.50/SF, MG**  
**Sale Price: : \$100 per Sq Ft**

**Property Features**

- Ideally situated near Tucson Medical Center and St. Joseph’s Hospital
- Outstanding access and convenience
- Interior improvements negotiable
- Sale subject to ground lease
- Suite A210 leased through June 2024, but available for purchase

Property Highlights			
Suite	Sale Price	Sq Ft	Floor Plan
Suite *A210	\$29,100	291 SF	1 office, 1 restroom
Suite *A220	\$115,300	1,153 SF	3 exam rooms, business, reception, 2 restrooms, physician office and storage
Suite **C270	\$62,200	622 SF	4 offices
Suite **C280	\$142,900	1,429 SF	4 exam rooms, business, reception, lab area, 2 restrooms, physician office and storage

\*Suites can be combined for a total of 1,444 SF

\*\*Suites can be combined for a total of 2,051 SF

**Richard M. Kleiner, MBA, Principal**  
**Commerical Properties**  
 +1 520 546 2745  
 rkleiner@picor.com

**PICOR Commercial Real Estate Services**  
 5151 E. Broadway Blvd, Suite 115  
 Tucson, Arizona 85711  
 phone: +1 520 748 7100  
 picor.com

**For Sale: A210 - \$29,100    A220 - \$115,300    Combined - \$144,400**

**OFFICE / MEDICAL**

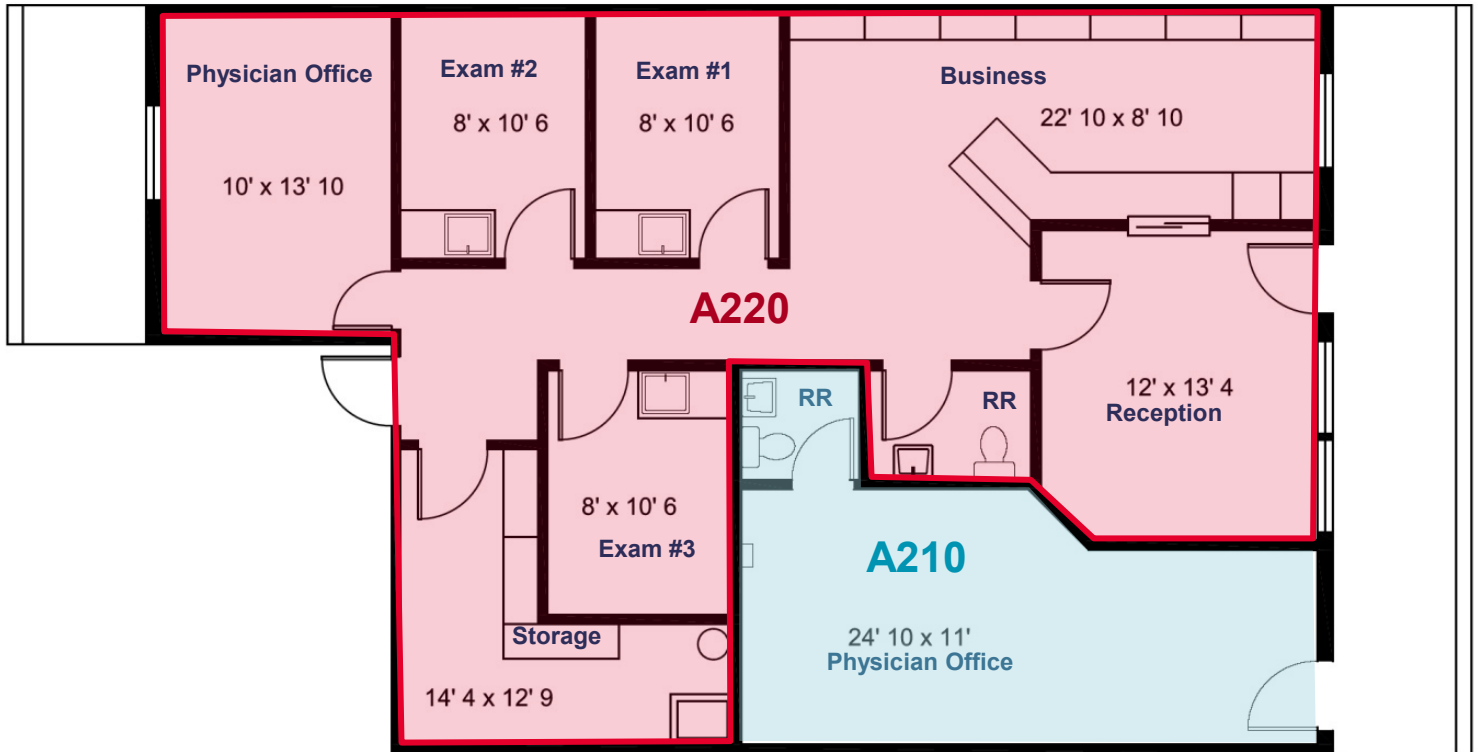
**Suite A210 (291 SF)**

One office, one restroom

**Suite A220 (1,153 SF)**

3 exam rooms, business, reception, 2 restrooms,  
2 physician office and storage

\*Or combine suites to a total of 1,444 SF



**For Sale: C270 - \$62,200, C280 \$142,900 Combined - \$205,100**

**Suite C270 (622 SF)**

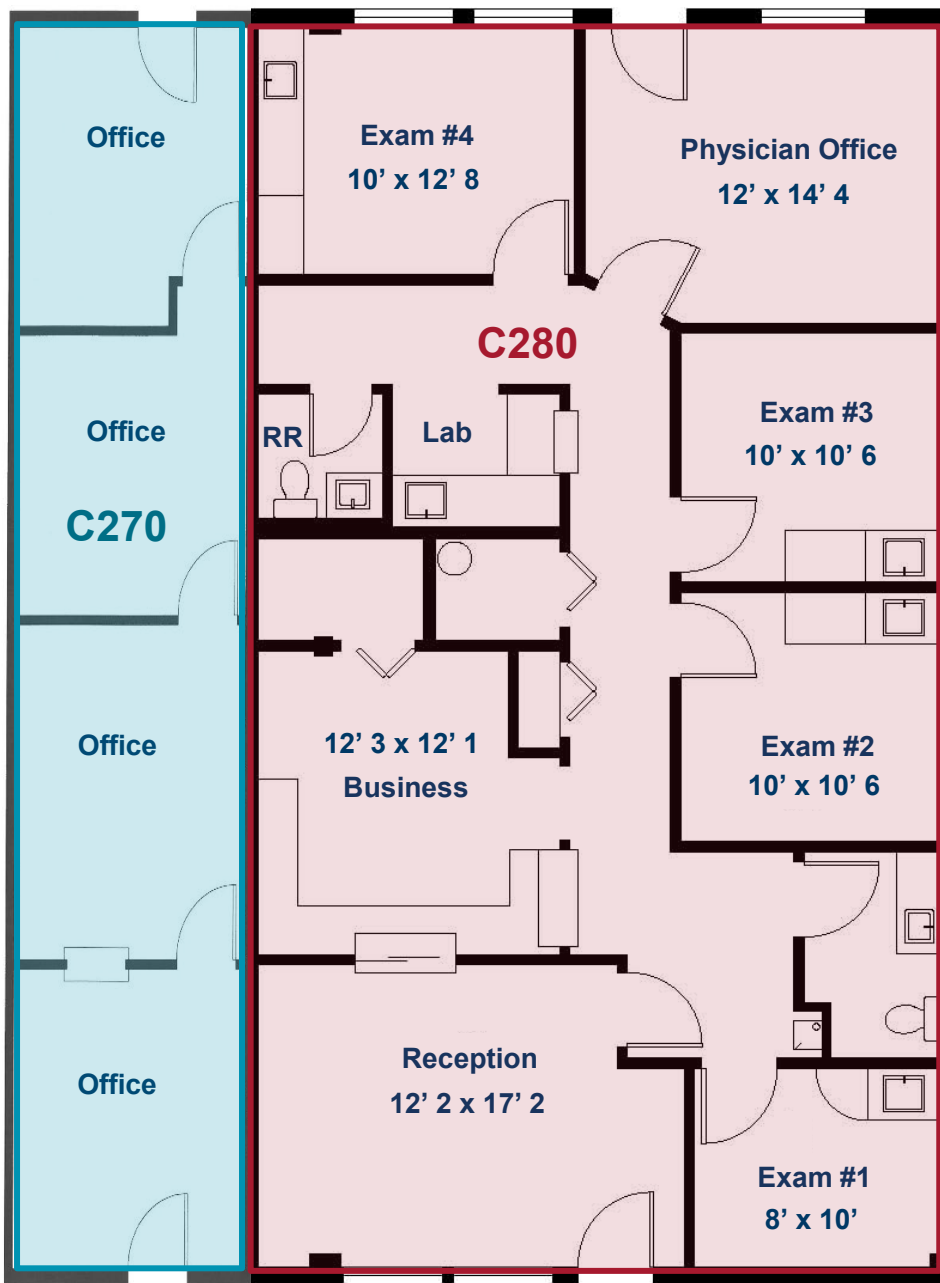
4 business offices

**C280 (1,429 SF)**

4 exam rooms, business, reception, lab area, 2 restrooms, physician office, 4 business offices, and storage

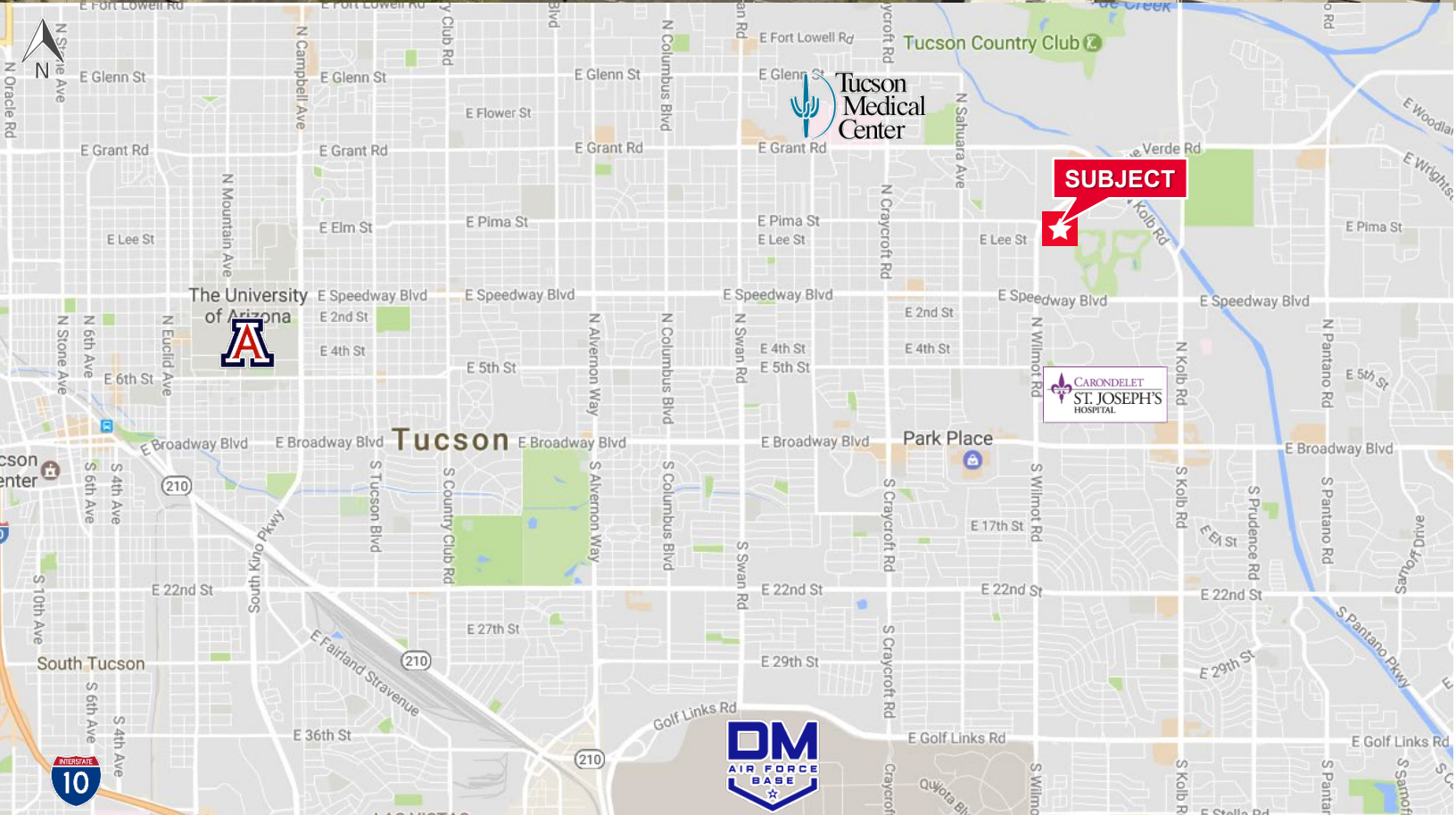
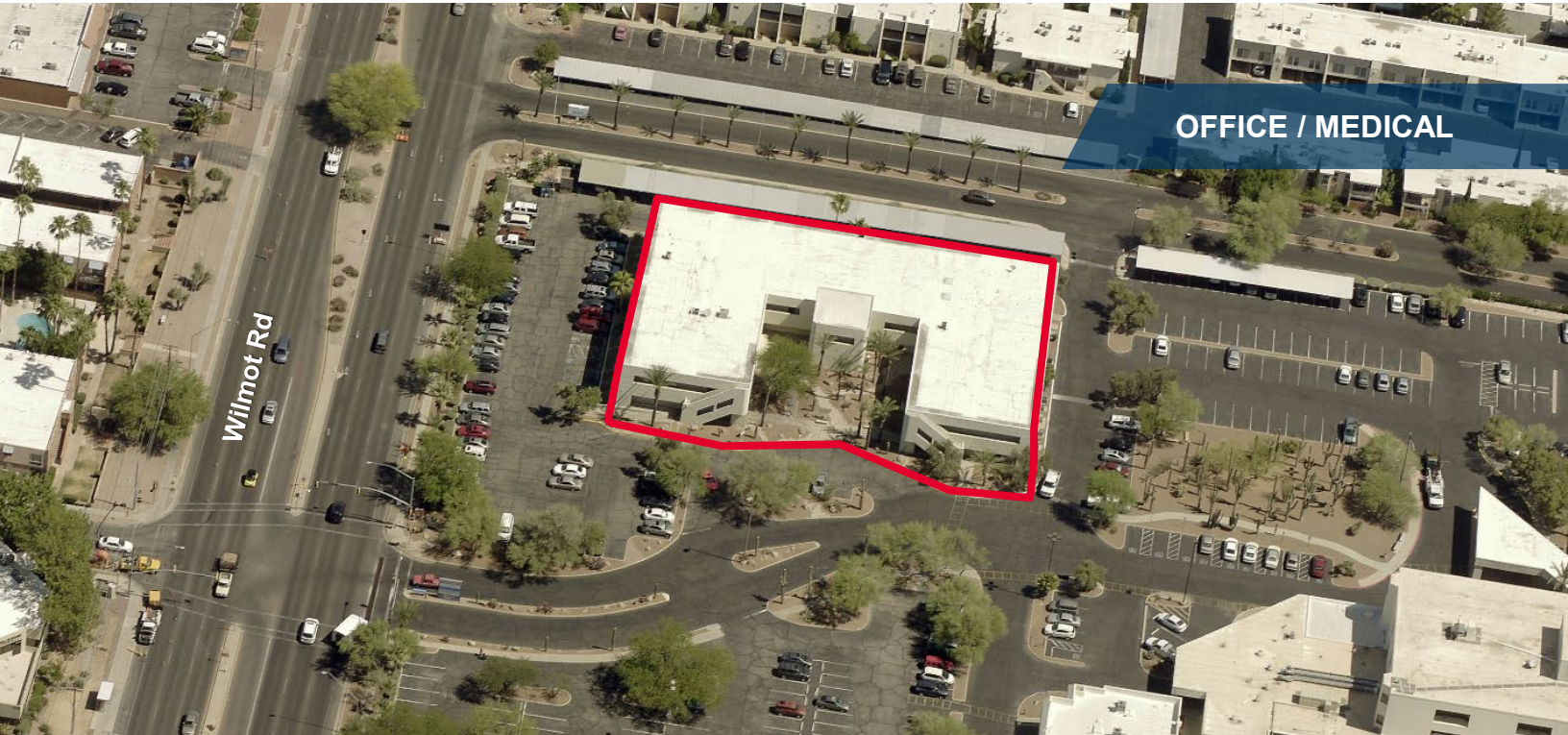
\*Or combine suites to a total of 2,051 SF

**OFFICE / MEDICAL**





**FOR SALE OR LEASE**  
**El Dorado Medical Plaza**  
 1500 N. Wilmot Road  
 Tucson, Arizona 85712



*Independently Owned and Operated / A Member of the Cushman & Wakefield Alliance*  
 Cushman & Wakefield Copyright 2021. No warranty or representation, express or implied, is made to the accuracy or completeness of the information contained herein, and same is submitted subject to errors, omissions, change of price, rental or other conditions, withdrawal without notice, and to any special listing conditions imposed by the property owner(s). As applicable, we make no representation as to the condition of the property (or properties) in question.  
 6/30/2022