

St. Mary's Hospital Medical Plaza 2

395 N. Silverbell Road, Tucson AZ 85745

Thomas J. Nieman Principal, Office
Properties

+1 520 546 2728

tnieman@picor.com

Richard M. Kleiner, MBA Principal,
Office Properties

+1 520 546 2745

rkleiner@picor.com

Alexis Corona

Associate, Commercial Properties

+1 520 546 2729

acorona@picor.com

PICOR Commercial Real Estate Services

5151 E. Broadway Blvd, Ste 115

Tucson, AZ 85711

phone: +1 520 748 7100

picor.com

Carondelet St. Mary's Hospital Medical Plaza 2



St. Mary's Hospital Medical Plaza 2

Located on Carondelet St. Mary's Hospital Campus

BUILDING FEATURES

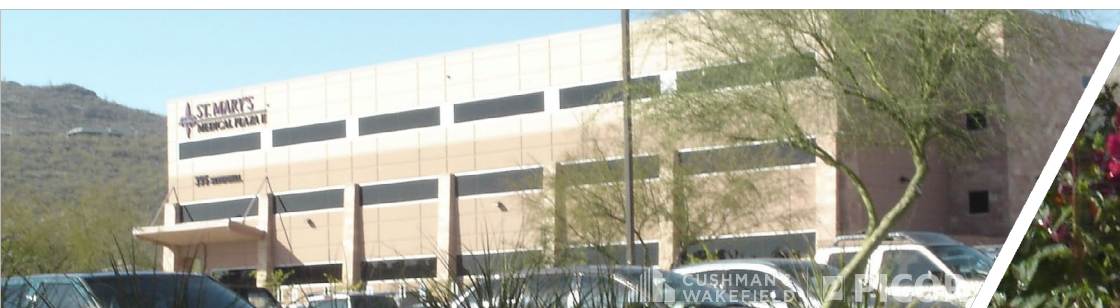
- Located on the campus of St. Mary's Hospital
- Professional atmosphere in a well-designed, three-story building
- State-of-the-art HVAC to provide comfortable multiple-zoned spaces
- Improved allowance negotiated based upon term
- On-site maintenance and management
- Great views
- Ample on-site parking
- Free physician and staff parking in a shaded parking ramp

IMMEDIATE OCCUPANCY

FULL-SERVICE RENT:
PLEASE CONTACT AGENT

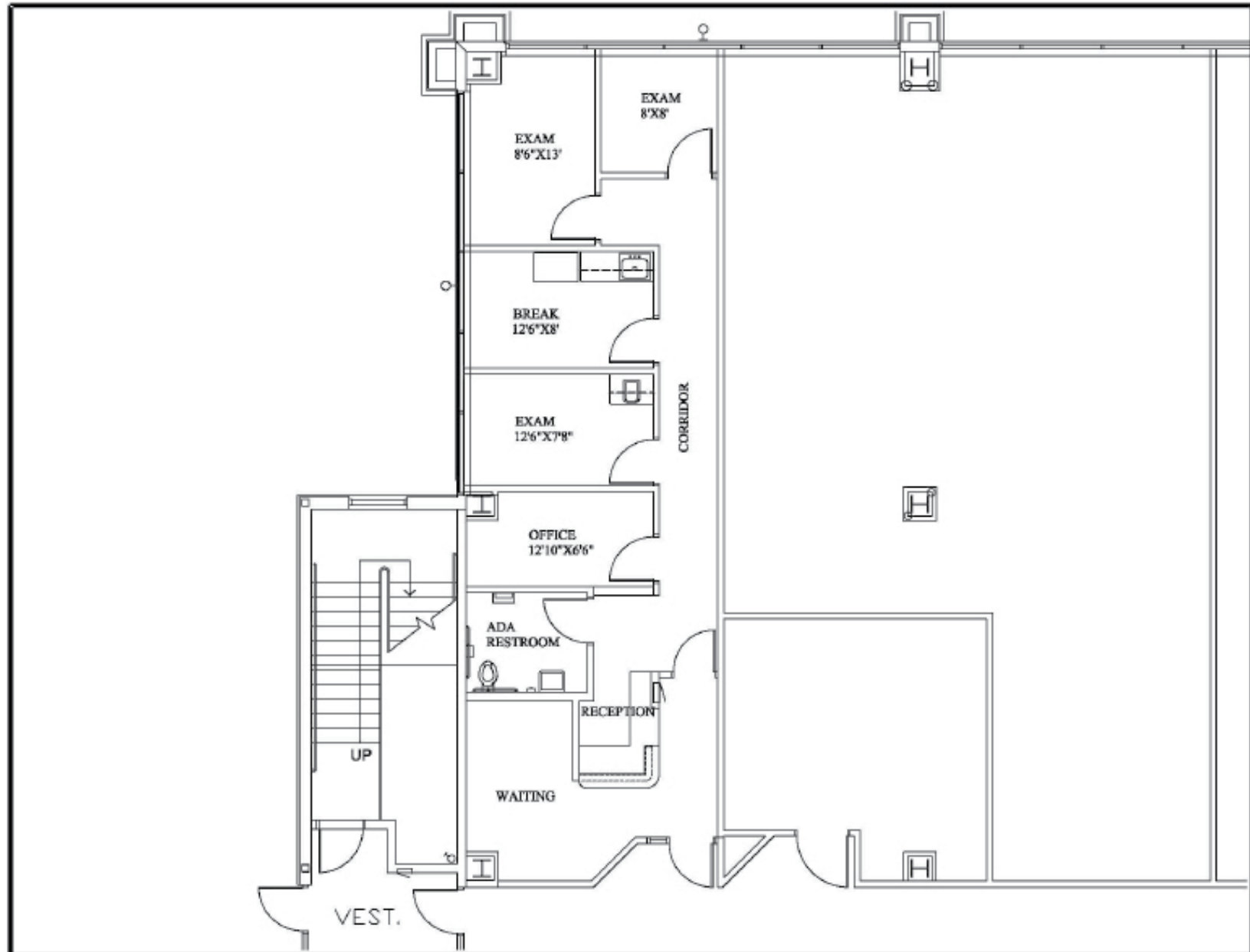
AVAILABLE SPACE:
1,035-5,387 SF
MAY SUBDIVIDE

TI ALLOWANCE:
NEGOTIABLE



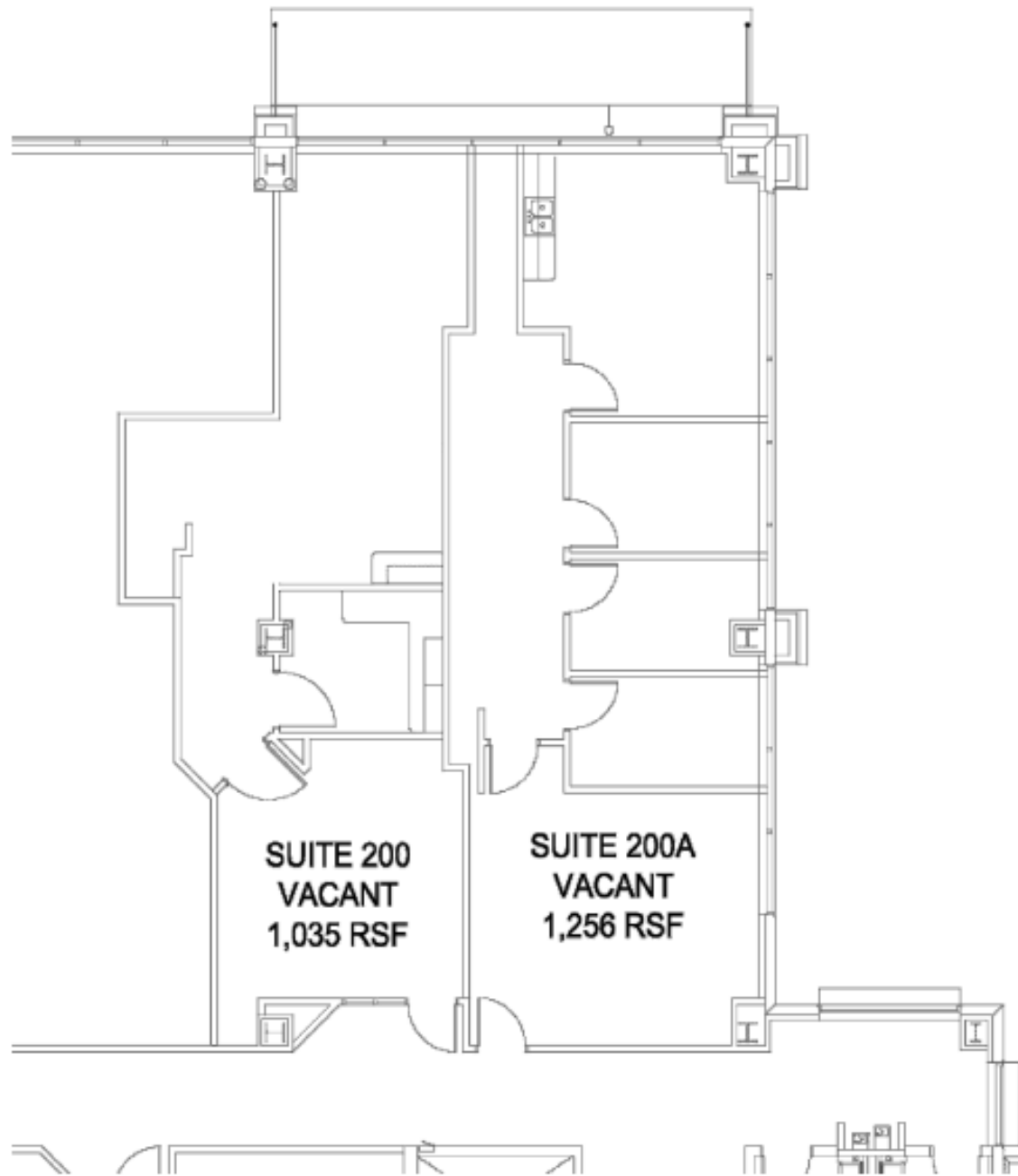
SITE/FLOOR PLAN

1st Floor
Suite 115 - 1,173 RSF



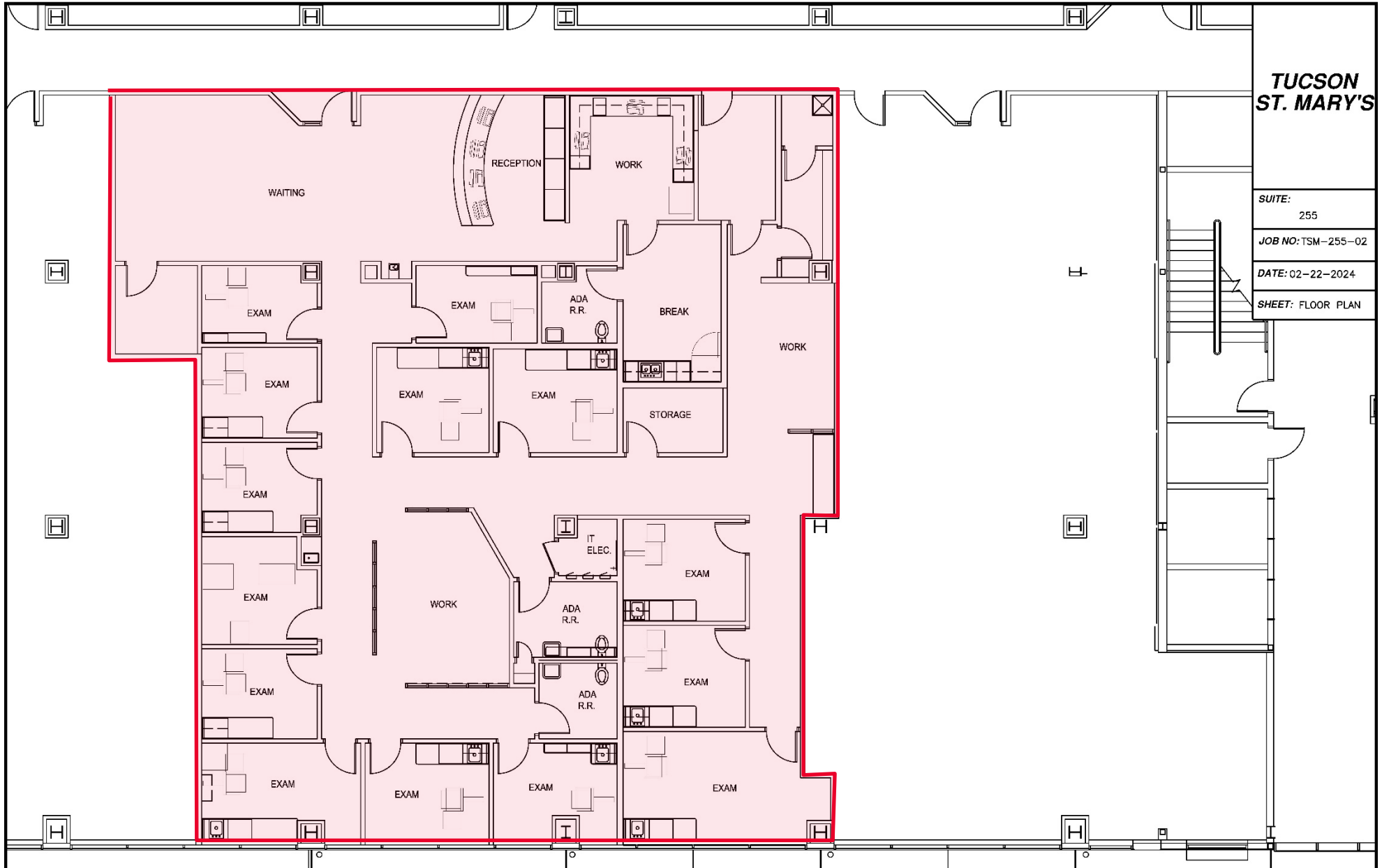
SITE/FLOOR PLAN

2nd Floor
Suite 200 - 1,035 RSF
Suite 200A - 1,256 RSF



SITE/FLOOR PLAN

2nd Floor
Suite 255 - 5,387 RSF
Available ~June/July 2024



**TUCSON
ST. MARY'S**

SUITE:	255
JOB NO:	TSM-255-02
DATE:	02-22-2024
SHEET:	FLOOR PLAN

AERIAL

395 N. SILVERBELL ROAD

