

St. Joseph's Hospital

Medical Plaza 2

6567 E Carondelet Dr. Tucson, AZ 85710

Thomas J. Nieman

Principal, Office Properties

+1 520 546 2728

tnieman@picor.com

Richard M. Kleiner, MBA

Principal, Office Properties

+1 520 546 2745

rkleiner@picor.com

Alexis Corona

Associate, Office Properties

+1 520 546 2729

acorona@picor.com

PICOR Commercial Real Estate Services

5151 E. Broadway Blvd, Ste 115

Tucson, AZ 85711

phone: +1 520 748 7100

picor.com



St. Joseph's Hospital

St. Joseph's Hospital

Medical Plaza 2

BUILDING FEATURES

PROPERTY HIGHLIGHTS:

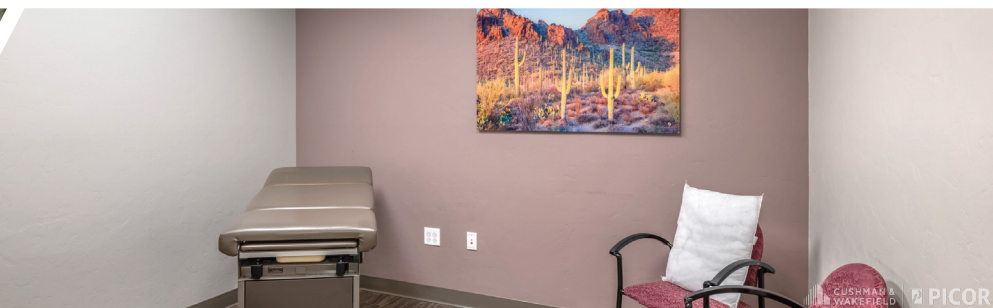
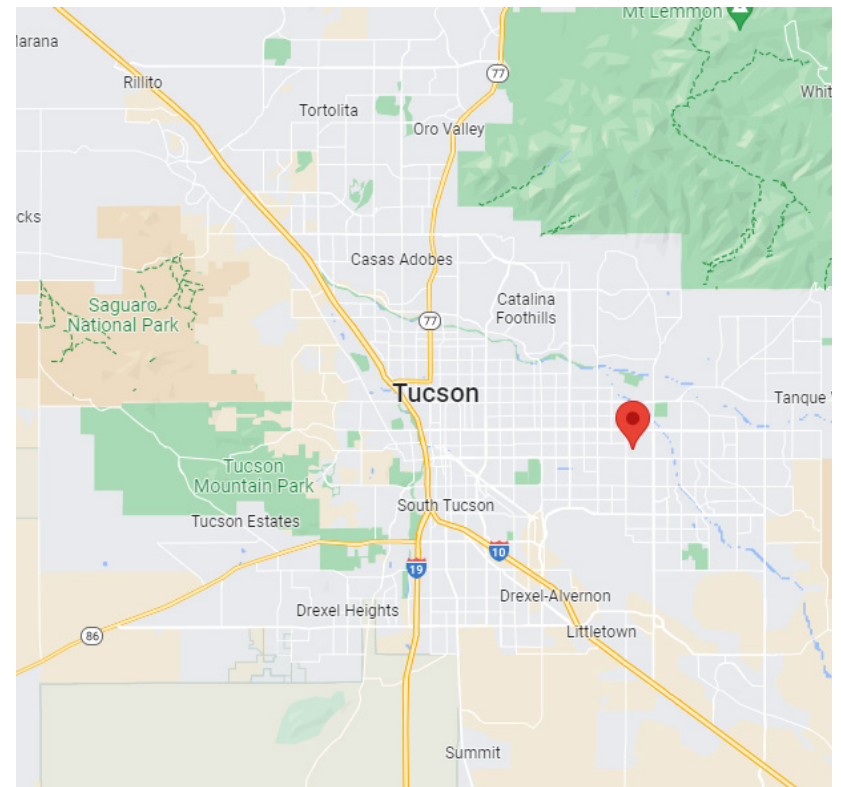
- Located on the campus of St. Joseph's Hospital
- Professional atmosphere in well-designed, five-story building
- State-of-the-art HVAC to provide comfortable multiple-zoned spaces
- Improvement allowance negotiated based upon term
- On-site maintenance and management
- Great views
- Ample on-site parking

IMMEDIATE OCCUPANCY

FULL SERVICE RENT:
PLEASE CONTACT AGENT

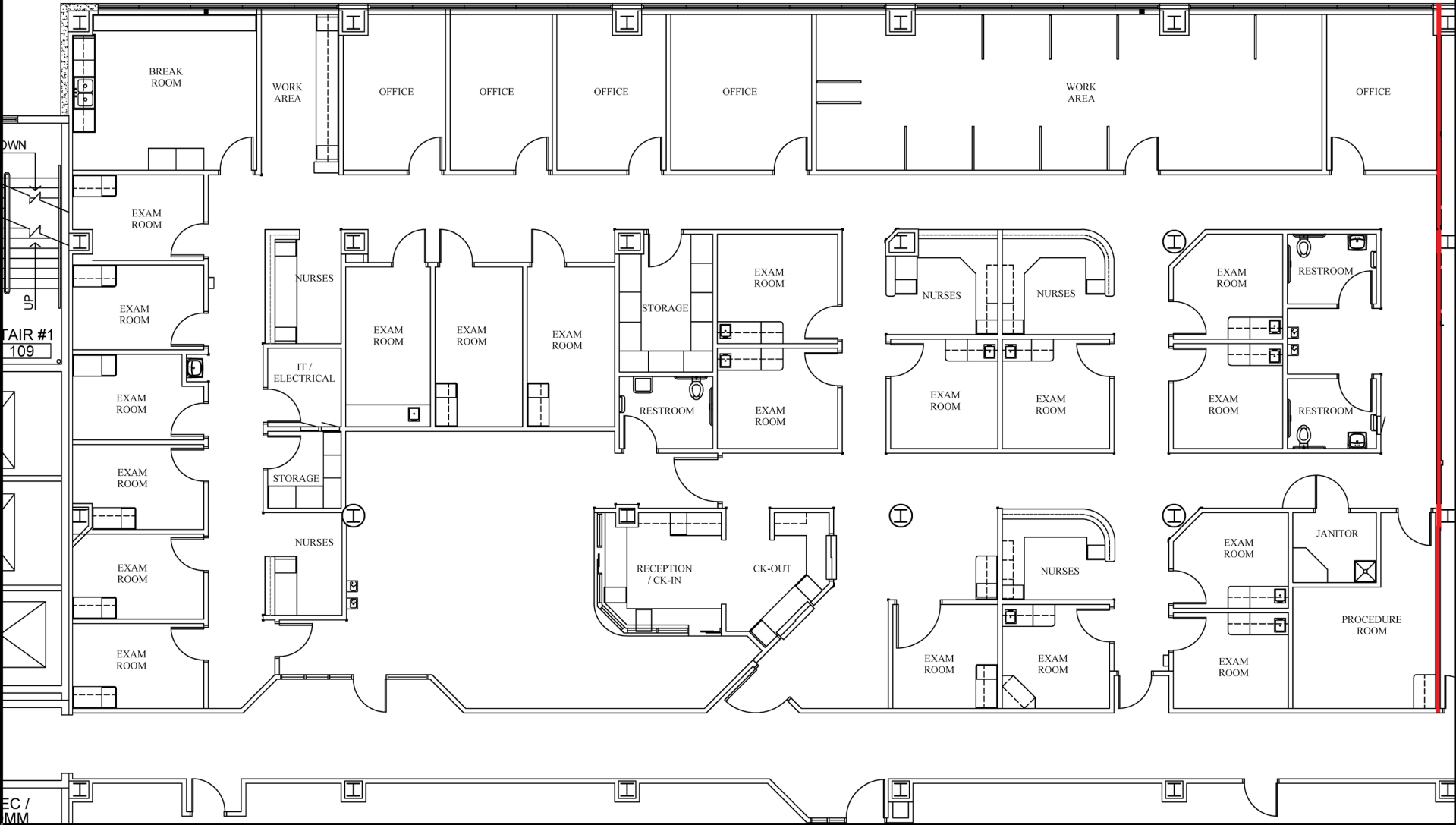
AVAILABLE SPACE:

- 7,946 & 8,963 SF
- Can demise for smaller requirements
 - Can combine for entire 3rd floor \pm 17,500 RSF



FLOOR PLAN

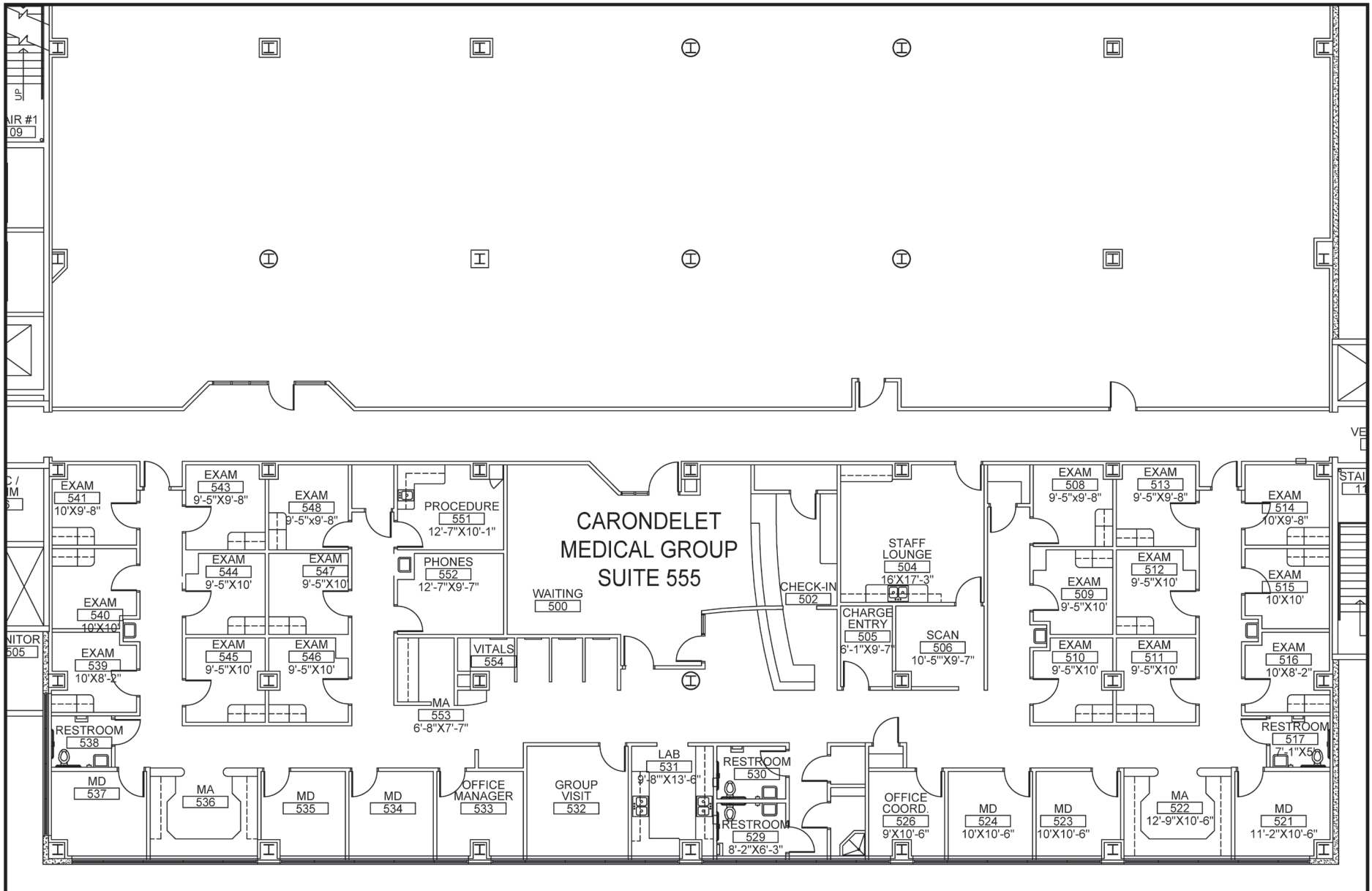
Suite 515 - 8,963 RSF
Can combine with Suite 555 for
entire 3rd floor ±17,500 RSF



FLOOR PLAN

Suite 555 - 7,946 RSF

Can combine with Suite 515 for
entire 3rd floor ±17,500 RSF



PROPERTY PHOTOS



AERIAL

6567 E Carondelet Dr. Tucson, AZ 85710

