

OFFICE



**1,100 SF Office Space Available**  
**Lease Rate: \$22/SF, MG**

### Property Highlights

- Shell Space Ready for Final Finishes
- Conference Room Available
- LOTS of Natural Light
- Close to Oro Valley Aquatics Center, CDO High School & Other Amenities
- Great Oro Valley Location

### Property Details

Property Taxes	\$7,828.30 (2022)
Parcel Size	248,583 SF
Assessor Parcel No.	225-11-295A
Zoning	Oro Valley - TP
Year Built	2021

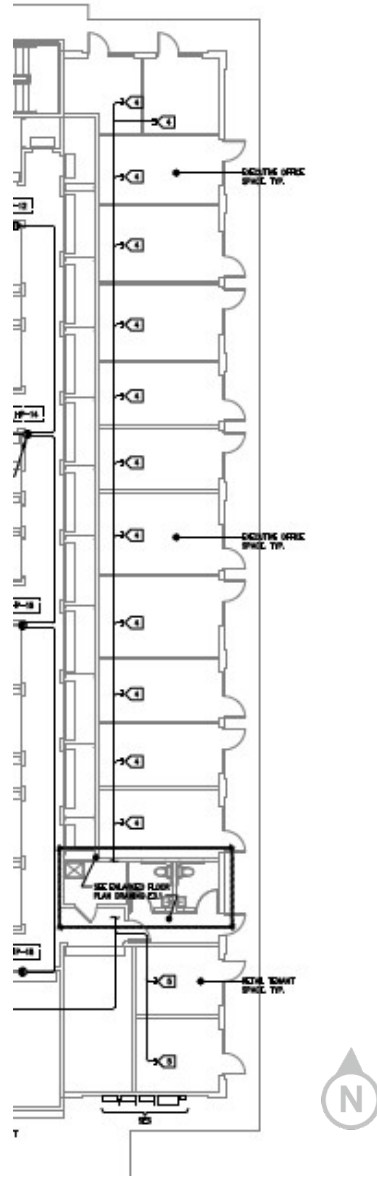


**Molly Mary Gilbert**  
**Office Properties**  
+1 520 546 2766  
[mgilbert@picor.com](mailto:mgilbert@picor.com)

**PICOR Commercial Real Estate Services**  
5151 E. Broadway Blvd, Suite 115  
Tucson, Arizona 85711  
phone: +1 520 748 7100  
[picor.com](http://picor.com)

**Floor Plan**

**OFFICE**



For more information, please contact:

**Molly Mary Gilbert**  
Office Properties  
+1 520 546 2766  
mgilbert@picor.com

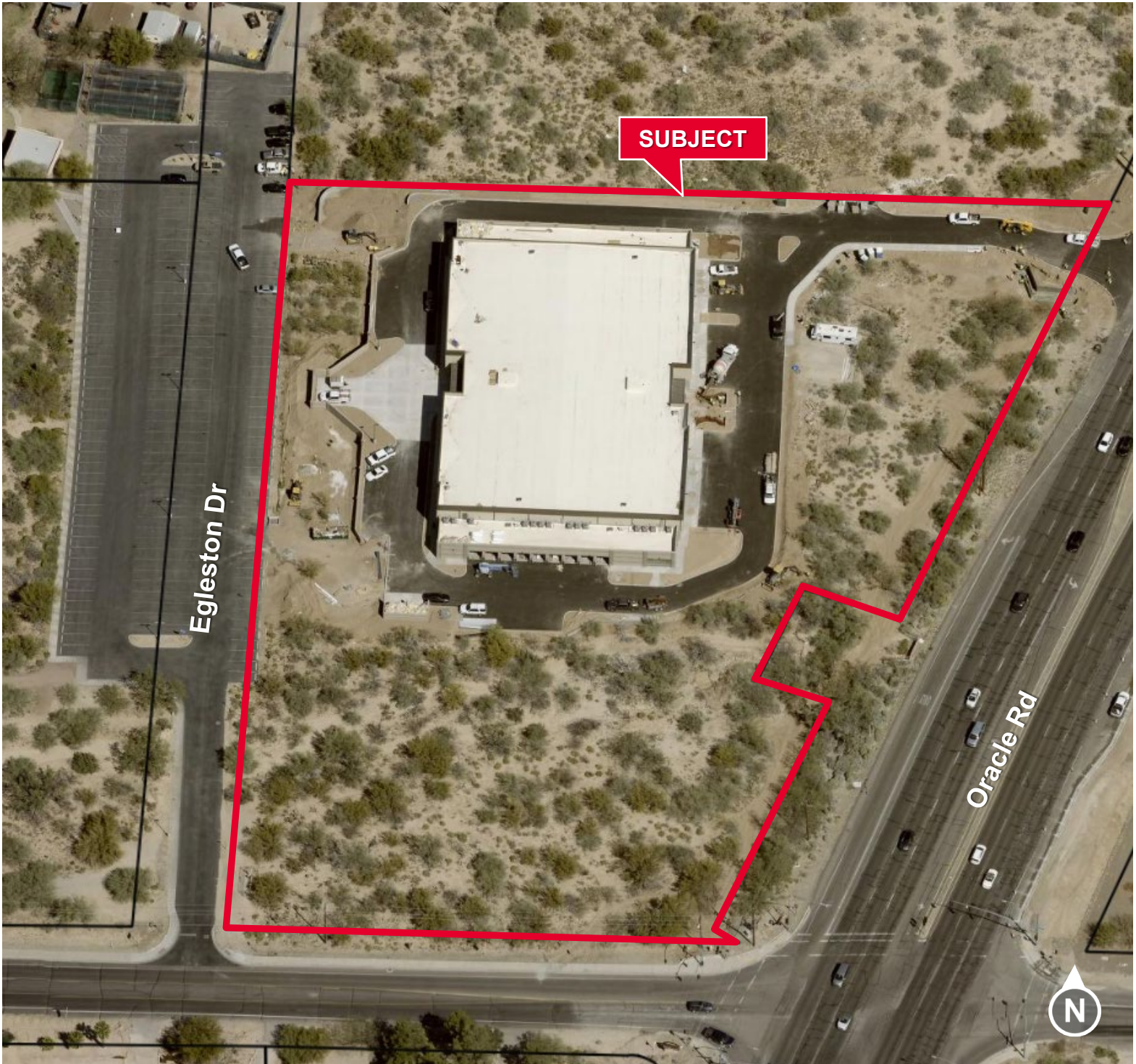
**PICOR Commercial Real Estate Services**  
5151 E. Broadway Blvd, Suite 115  
Tucson, Arizona 85711  
phone: +1 520 748 7100  
picor.com

*Independently Owned and Operated / A Member of the Cushman & Wakefield Alliance*  
Cushman & Wakefield Copyright 2022. No warranty or representation, express or implied, is made to the accuracy or completeness of the information contained herein, and same is submitted subject to errors, omissions, change of price, rental or other conditions, withdrawal without notice, and to any special listing conditions imposed by the property owner(s). As applicable, we make no representation as to the condition of the property (or properties) in question. 10/3/2023





Aerial



*Independently Owned and Operated / A Member of the Cushman & Wakefield Alliance*

Cushman & Wakefield Copyright 2022. No warranty or representation, express or implied, is made to the accuracy or completeness of the information contained herein, and same is submitted subject to errors, omissions, change of price, rental or other conditions, withdrawal without notice, and to any special listing conditions imposed by the property owner(s). As applicable, we make no representation as to the condition of the property (or properties) in question.

10/3/2023



**Employment Map**





Property Photos

