



**1,500 – 3,478 SF Class A Medical Office Space**  
**Lease Rate: \$26.50/SF MG**

**Property Highlights**

- Property is turnkey ready, with furniture and medical equipment that may be included in lease
- Available medical office condo with convenient at-door parking
- Recently renovated interior with new floor coverings and paint
- Located in a well-maintained strip center with other offices and retail tenants
- Landlord may consider demising

**Property Details**

Lease Type	Modified Gross
Possession	Immediate
Zoning	CB-1
Year Built	2002
Parking	Ample parking available on site

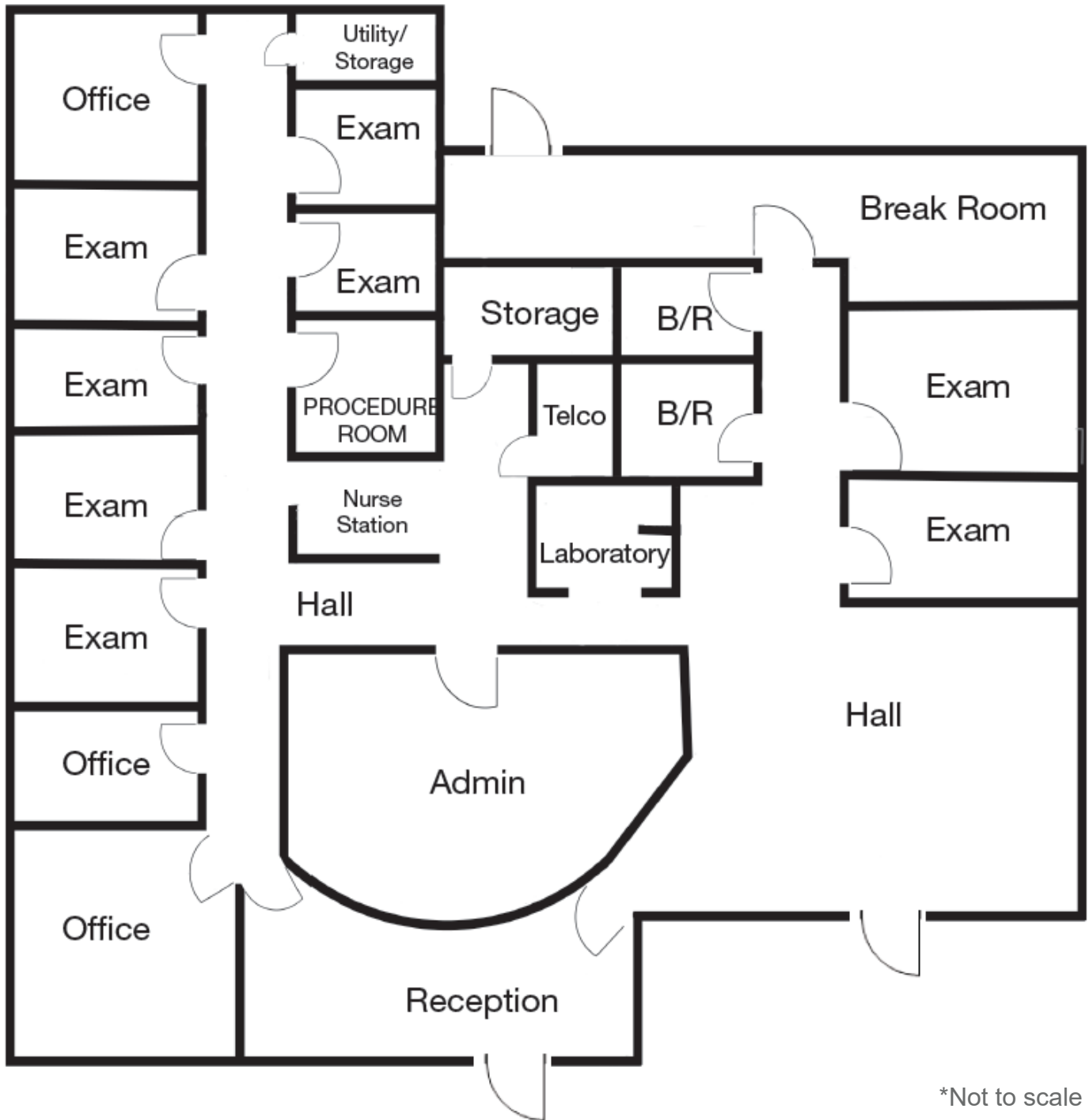


**Jason Abraham Shaltiel**  
Commercial Properties  
+1 520 546 2791  
jshaltiel@picor.com

**Thomas J. Nieman**  
Principal, Office Properties  
+1 520 546 2728  
tnieman@picor.com

**PICOR Commercial Real Estate Services**  
5151 E. Broadway Blvd, Suite 115  
Tucson, Arizona 85711  
phone: +1 520 748 7100  
picor.com

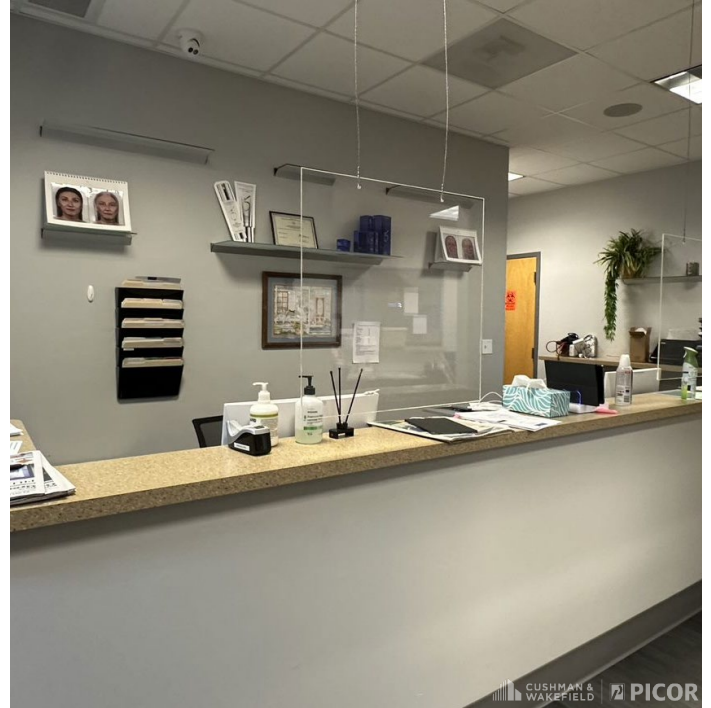
Floor Plan



Property Photos



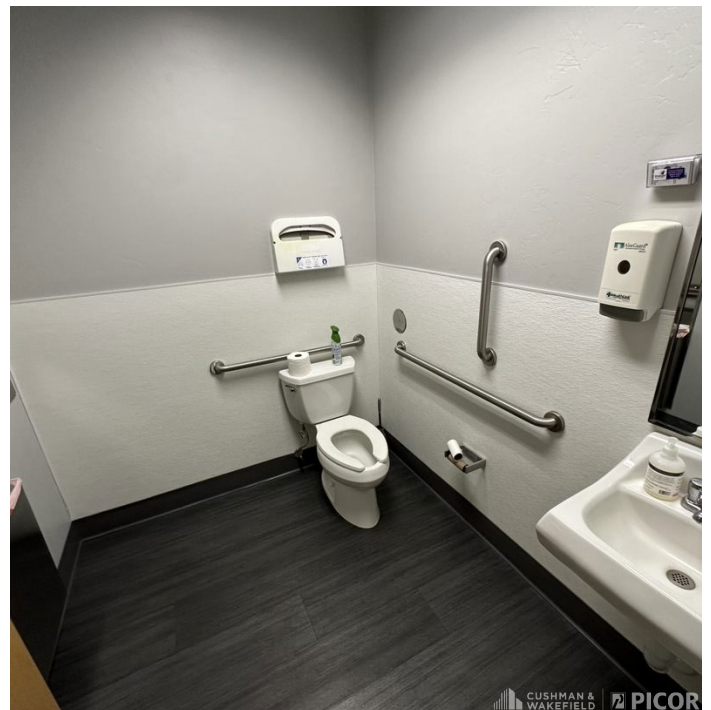
Reception Work Area



Front of Reception



Lobby



Restroom

*Independently Owned and Operated / A Member of the Cushman & Wakefield Alliance*

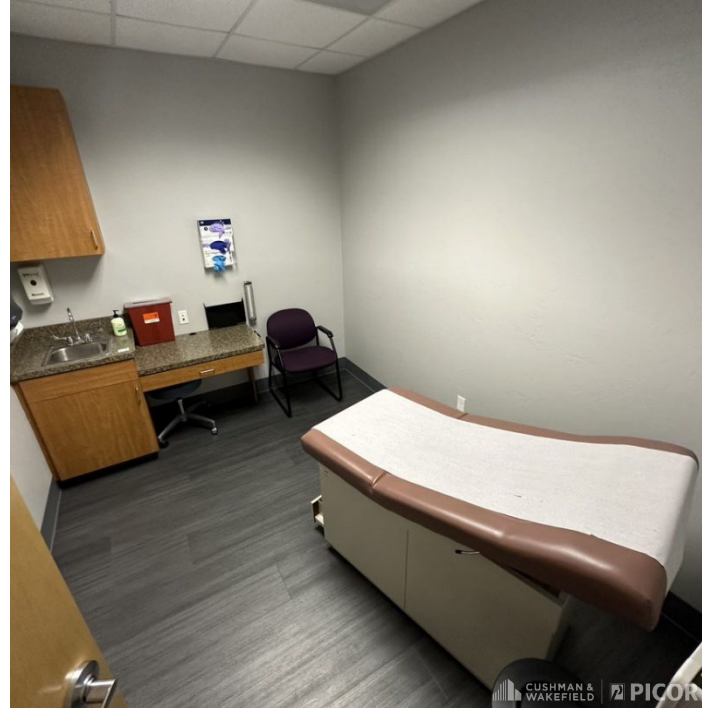
Cushman & Wakefield Copyright 2022. No warranty or representation, express or implied, is made to the accuracy or completeness of the information contained herein, and same is submitted subject to errors, omissions, change of price, rental or other conditions, withdrawal without notice, and to any special listing conditions imposed by the property owner(s). As applicable, we make no representation as to the condition of the property (or properties) in question.

8/9/2024

Property Photos



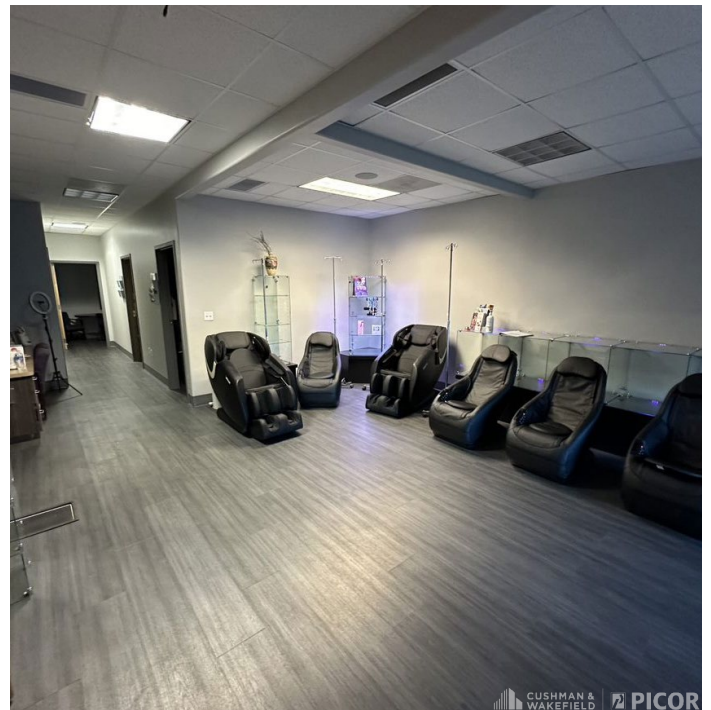
Room 1



Room 2



Room 3



Room 4

*Independently Owned and Operated / A Member of the Cushman & Wakefield Alliance*

Cushman & Wakefield Copyright 2022. No warranty or representation, express or implied, is made to the accuracy or completeness of the information contained herein, and same is submitted subject to errors, omissions, change of price, rental or other conditions, withdrawal without notice, and to any special listing conditions imposed by the property owner(s). As applicable, we make no representation as to the condition of the property (or properties) in question.

8/9/2024

**Aerial**



**Jason Abraham Shaltiel**  
Commercial Properties  
+1 520 546 2791  
[jshaltiel@picor.com](mailto:jshaltiel@picor.com)

**Thomas J. Nieman**  
Principal, Office Properties  
+1 520 546 2728  
[tنيان@picor.com](mailto:tنيان@picor.com)

**PICOR Commercial Real Estate Services**  
5151 E. Broadway Blvd, Suite 115  
Tucson, Arizona 85711  
phone: +1 520 748 7100  
[picor.com](http://picor.com)