



[CLICK TO VIEW VIRTUAL TOUR](#)

**4,993 SF Office Space**

**Lease Rate: \$ 20.00/SF NNN (Estimate - \$6.25/SF)**

### Property Highlights

- Prestigious central location at Swan and Camp Lowell in Village Office with easy access to the Foothills and Central Tucson
- Great functional layout and move-in ready for Physical Therapy use
- Close proximity to Tucson Medical Center
- Zoning: O-2, City of Tucson

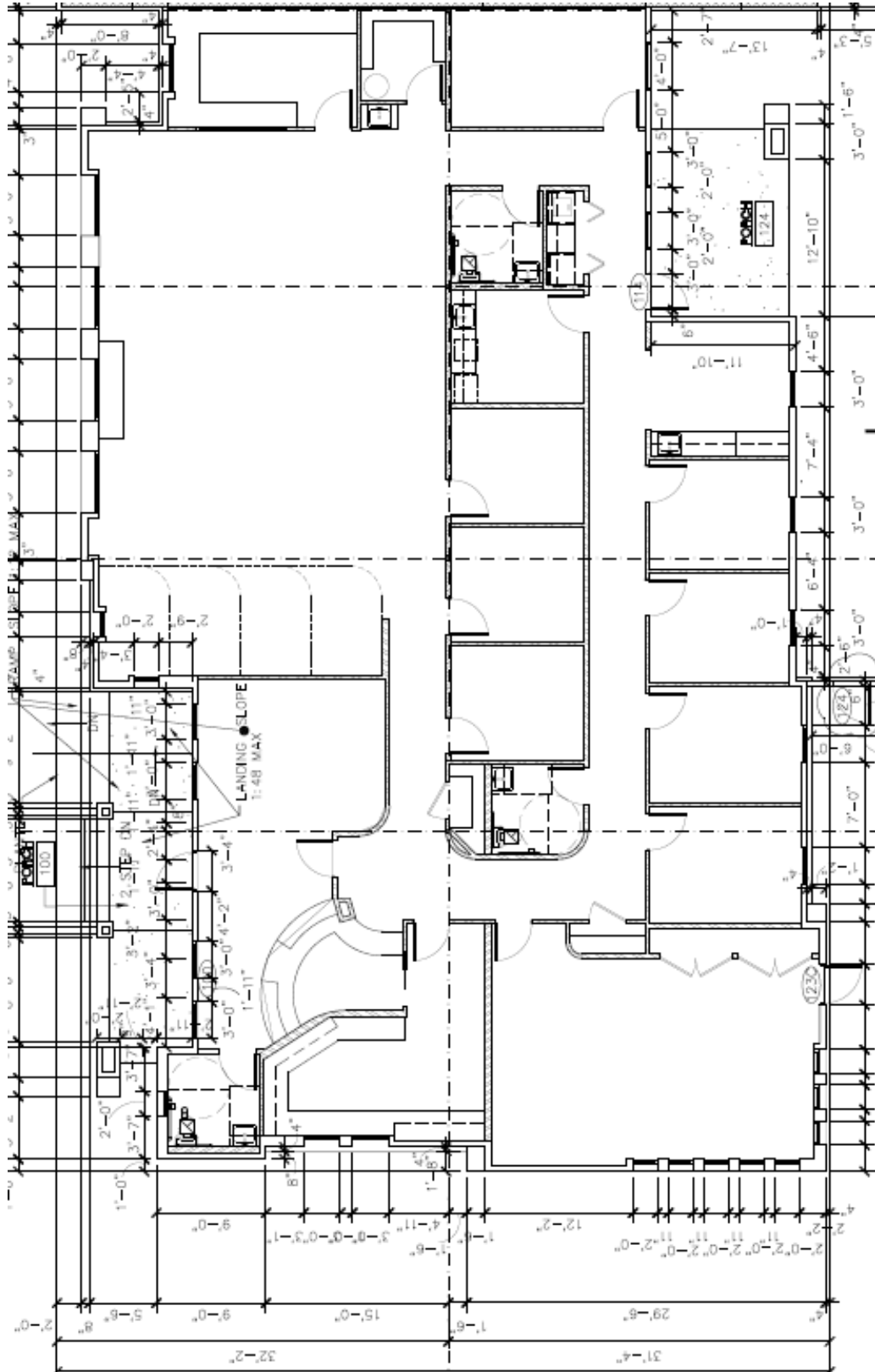


**Thomas J. Nieman**  
Principal, Office Properties  
+1 520 546 2728  
[tnieman@picor.com](mailto:tnieman@picor.com)

**Aaron LaPrise**  
Principal, Commercial Properties  
+1 520 546 2770  
[alaprise@picor.com](mailto:alaprise@picor.com)

**PICOR Commercial Real Estate Services**  
5151 E. Broadway Blvd, Suite 115  
Tucson, Arizona 85711  
phone: +1 520 748 7100  
[picor.com](http://picor.com)

Floor Plan





Aerial View

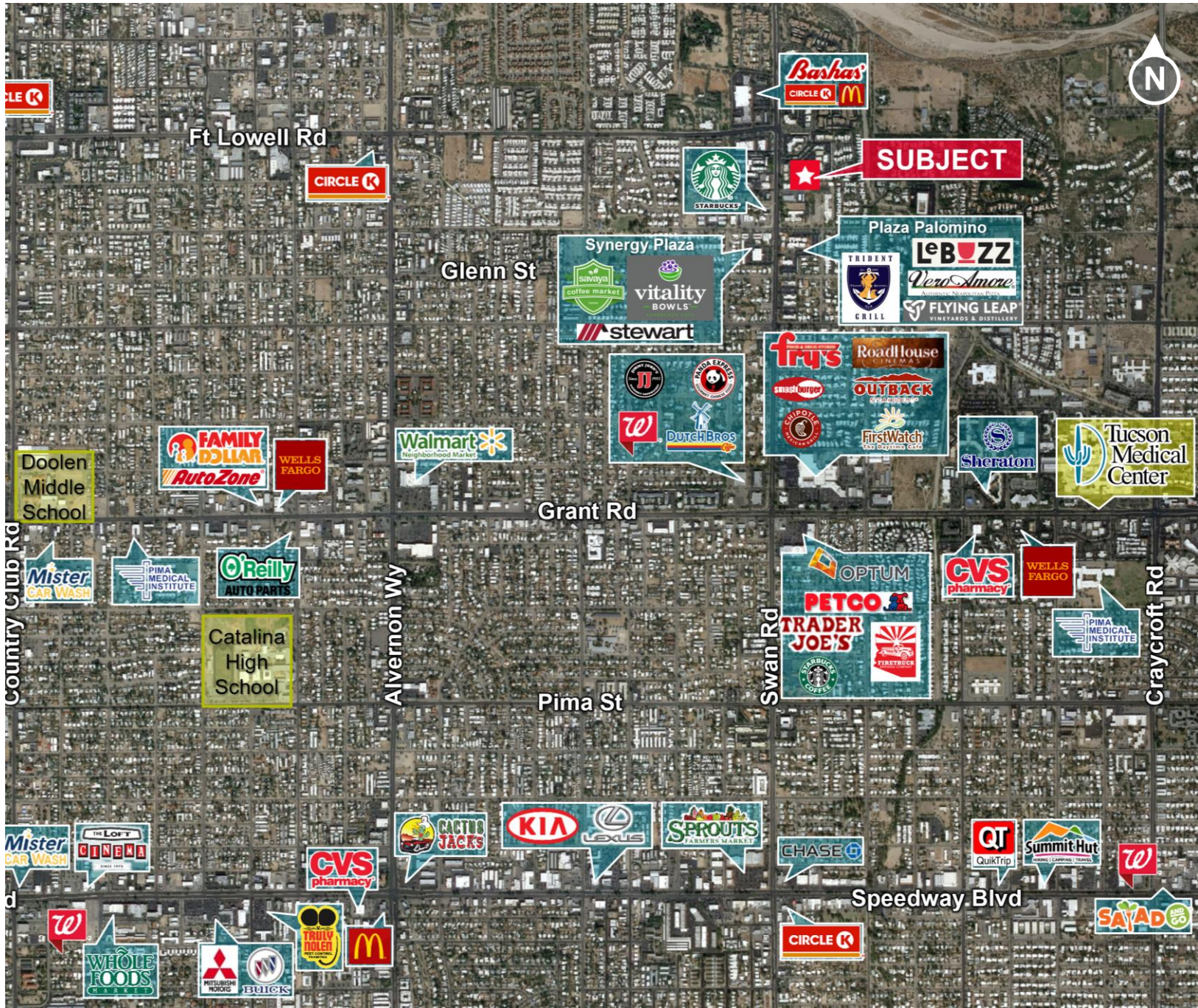


**Thomas J. Nieman**  
Principal, Office Properties  
+1 520 546 2728  
[tjnieman@picor.com](mailto:tjnieman@picor.com)

**Aaron LaPrise**  
Principal, Commercial Properties  
+1 520 546 2770  
[alaprise@picor.com](mailto:alaprise@picor.com)

**PICOR Commercial Real Estate Services**  
5151 E. Broadway Blvd, Suite 115  
Tucson, Arizona 85711  
phone: +1 520 748 7100  
[picor.com](http://picor.com)

Trade Map



Thomas J. Nieman  
Principal, Office Properties  
+1 520 546 2728  
[tjnieman@picor.com](mailto:tjnieman@picor.com)

Aaron LaPrise  
Principal, Commercial Properties  
+1 520 546 2770  
[alaprise@picor.com](mailto:alaprise@picor.com)

PICOR Commercial Real Estate Services  
5151 E. Broadway Blvd, Suite 115  
Tucson, Arizona 85711  
phone: +1 520 748 7100  
[picor.com](http://picor.com)

*Independently Owned and Operated / A Member of the Cushman & Wakefield Alliance*

Cushman & Wakefield Copyright 2022. No warranty or representation, express or implied, is made to the accuracy or completeness of the information contained herein, and same is submitted subject to errors, omissions, change of price, rental or other conditions, withdrawal without notice, and to any special listing conditions imposed by the property owner(s). As applicable, we make no representation as to the condition of the property (or properties) in question.

3/12/2025