



Ajo/Evans Business Park

1100 E. Ajo Way Tucson, AZ 85713
3819 S. Evans Blvd Tucson AZ 85713



FOR LEASE

INDUSTRIAL / FLEX SPACE FOR LEASE ±964 - 2,612 SF AVAILABLE LEASE RATE: \$1.10 - \$1.12/SF/MO MG

Key Features

- Near Interstate 10
- Functional Flex / Industrial Configurations

Property Details

Property Name	Ajo/Evans Business Park
Address	3819 S Evans Blvd Suite 301 & 303
Zoning	I-1, Light Industrial, City of Tucson
Year Built	1984
Loading	Grade-Level
Clear Height	16' - 18'



Andrew Keim
Industrial Properties
+1 520 271 8950
akeim@picor.com

Alex Demeroutis
Industrial Properties
+1 520 546 2773
ademmeroutis@picor.com

picor.com

Availability

3819 S Evans Blvd	Size (SF)	Rent/SF	Notes
Suite 301*	±1,648 SF	\$1.12/SF/MG	Warehouse / Office
Suite 303*	±964 SF	\$1.12/SF/MG	Warehouse / Office

****Can be combined to ±2,612 SF with a reduced lease rate of \$1.10/SF/MG***



Andrew Keim
Industrial Properties
+1 520 271 8950
akeim@picor.com

Alex Demeroutis
Industrial Properties
+1 520 546 2773
ademmeroutis@picor.com

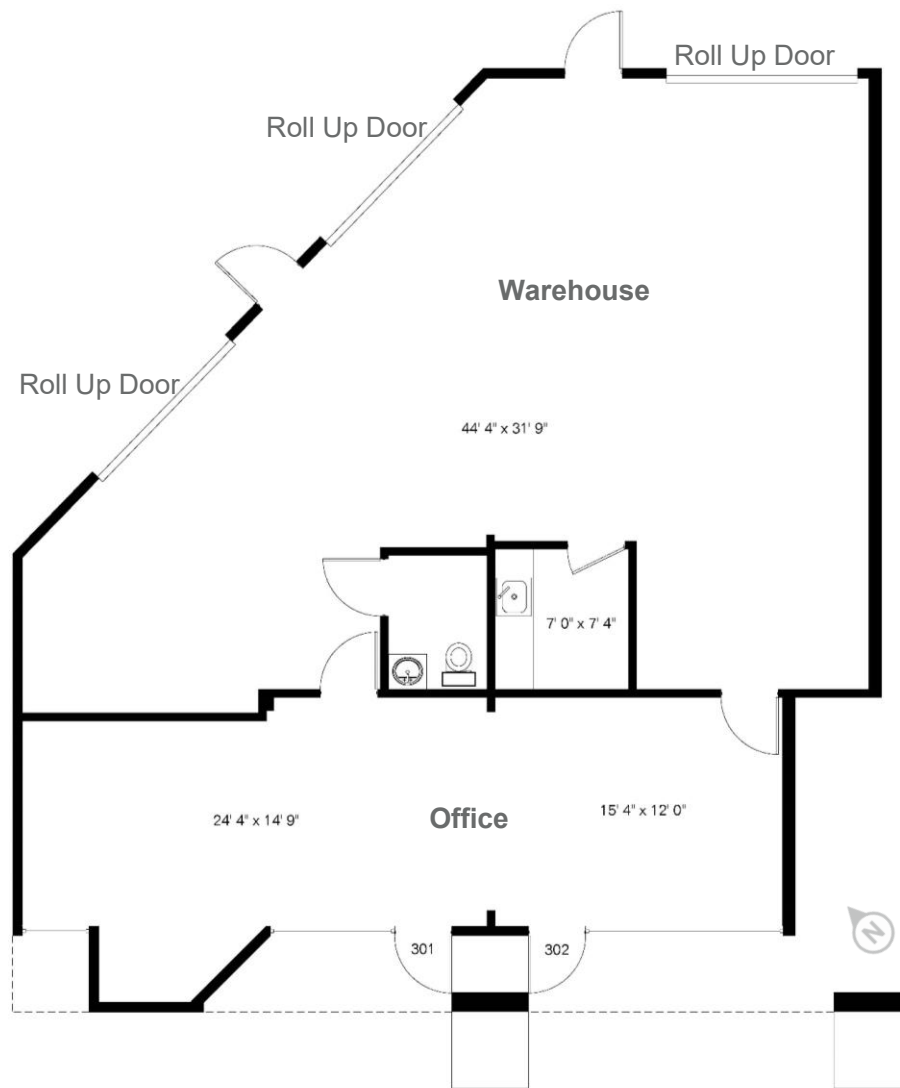
picor.com

Floor Plan – 3819 S Evans Blvd, Suite 301

±1,648 SF

Lease Rate: \$1.12/SF MG

-Warehouse/Office



Andrew Keim
Industrial Properties
+1 520 271 8950
akeim@picor.com

Alex Demeroutis
Industrial Properties
+1 520 546 2773
ademmeroutis@picor.com

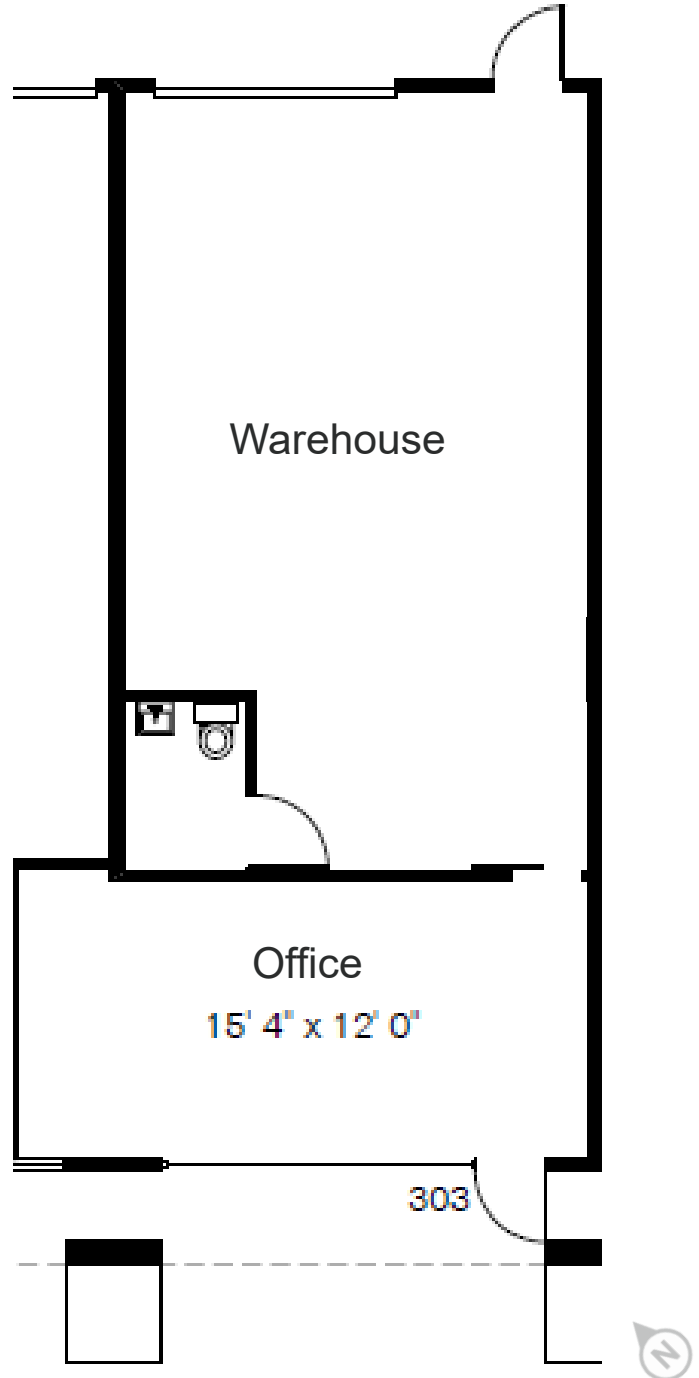
picor.com

Floor Plan – 3819 S Evans Blvd, Suite 303

±964 SF

Lease Rate: \$1.12/SF MG

-Warehouse/Office



Andrew Keim
Industrial Properties
+1 520 271 8950
akeim@picor.com

Alex Demeroutis
Industrial Properties
+1 520 546 2773
ademmeroutis@picor.com

picor.com

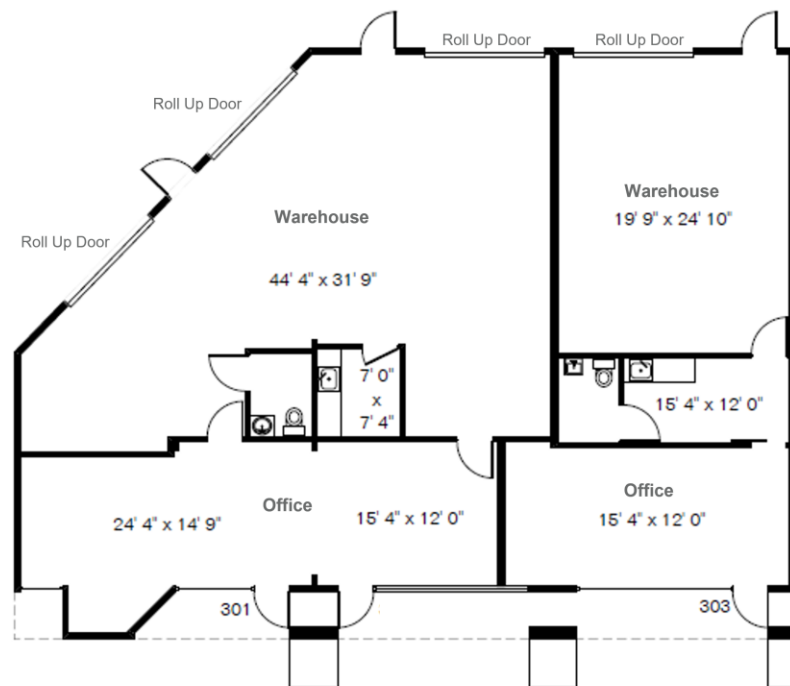
Floor Plan – 3819 S Evans Blvd, Suite 301 & 303 Combined

±2,612 SF

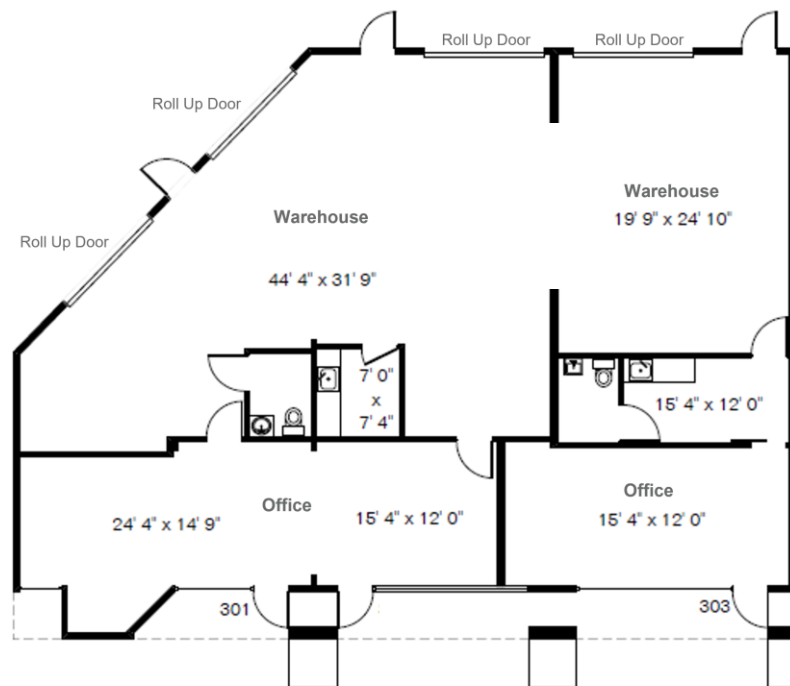
Lease Rate: \$1.10/SF MG

-Warehouse/Office

Current Floor Plan



Proposed Floor Plan – Warehouse Opening



Andrew Keim
Industrial Properties
+1 520 271 8950
akeim@picor.com

Alex Demeroutis
Industrial Properties
+1 520 546 2773
ademmeroutis@picor.com

picor.com

