

**RETAIL / LIGHT INDUSTRIAL**

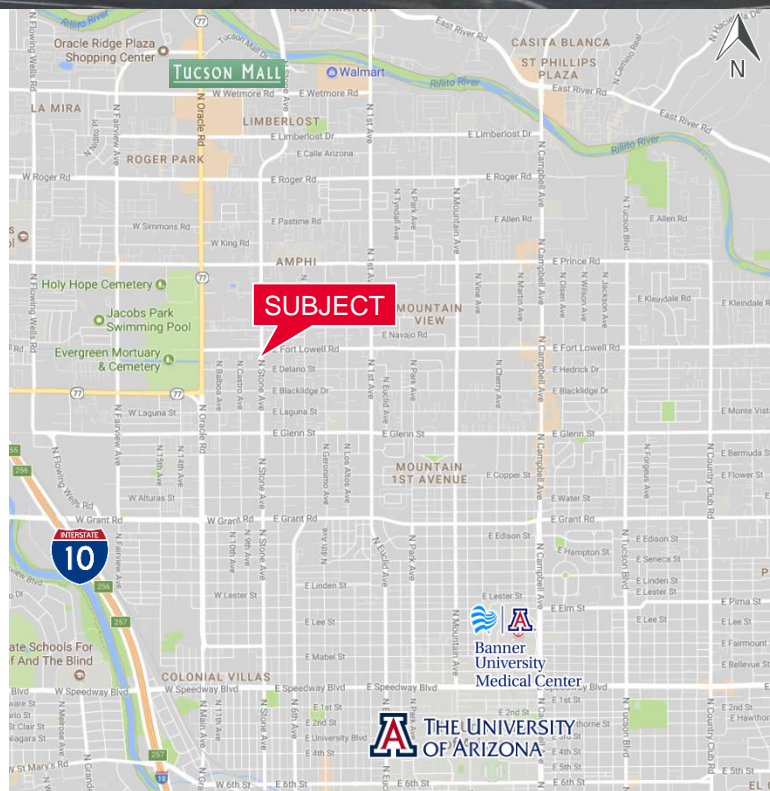


**Property Highlights**

- Convenient central location
- Offering economical rents
- Attractive complex
- Constructed in 1986
- Convenient parking

**Property Details**

Available	Suite 30 - 1,500 SF
Lease Type	Modified Gross
Zoning	C-2, City of Tucson
Parking	176 Surface spaces



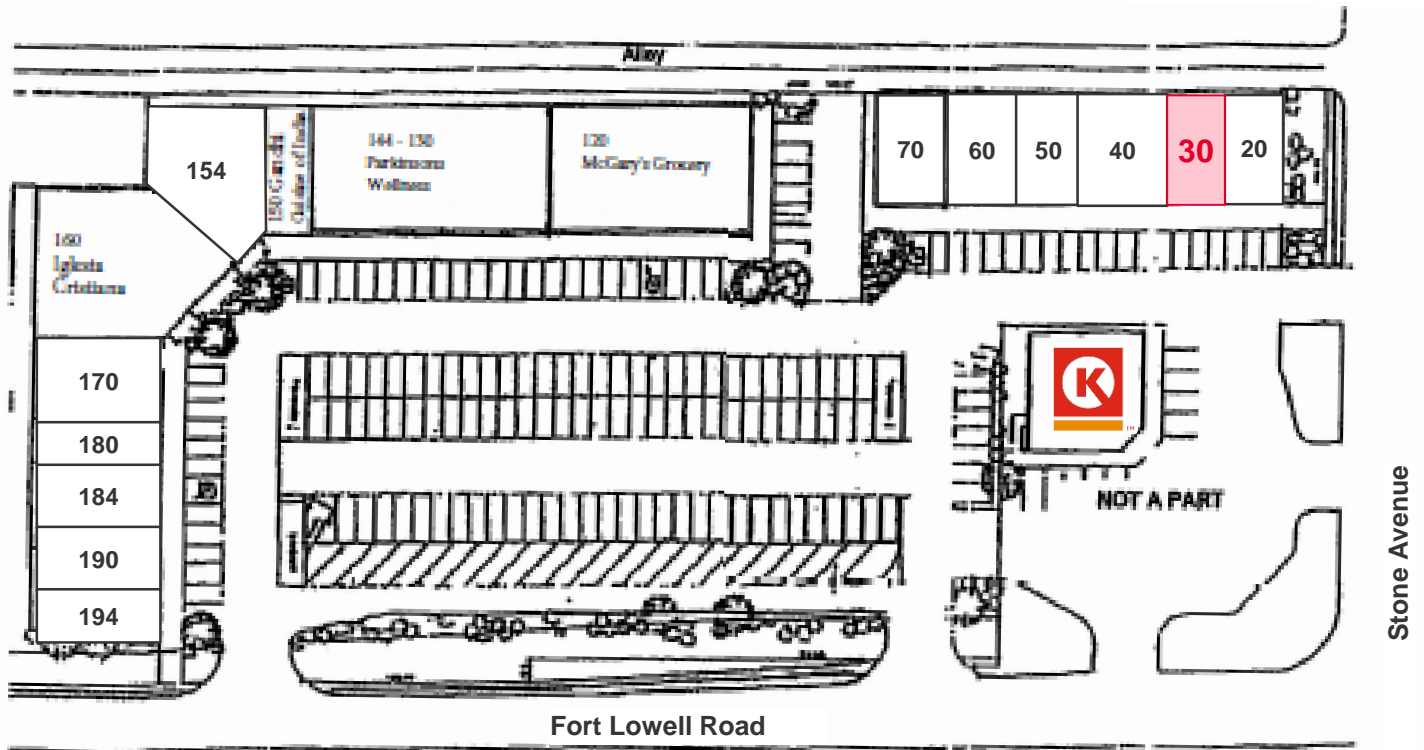
**Max Fisher**  
Industrial Properties  
+1 520 546 2709  
mfisher@picor.com

**Ramiro Scavo**  
Retail Properties  
+1 520 546 2764  
rscavo@picor.com

**PICOR Commercial Real Estate Services**  
5151 E. Broadway Blvd, Suite 115  
Tucson, Arizona 85711  
phone: +1 520 748 7100  
picor.com

*Independently Owned and Operated / A Member of the Cushman & Wakefield Alliance*

Cushman & Wakefield Copyright 2019. No warranty or representation, express or implied, is made to the accuracy or completeness of the information contained herein, and same is submitted subject to errors, omissions, change of price, rental or other conditions, withdrawal without notice, and to any special listing conditions imposed by the property owner(s). As applicable, we make no representation as to the condition of the property (or properties) in question.

**Site Plan**
**RETAIL / LIGHT INDUSTRIAL**


**Site Plan Not to Scale – For Illustration Purposes Only**

Availability				
Suite	Size (SF)	Configuration	Annual Base Rent	Monthly Base Rent
30	1,500	Warehouse	\$ 5.40 / SF	\$0.45/ SF

\*Tenant pays rent, plus \$1.16/SF/Yr. CAM charge, City of Tucson rental tax and own electric.



*Independently Owned and Operated / A Member of the Cushman & Wakefield Alliance*

Cushman & Wakefield Copyright 2019. No warranty or representation, express or implied, is made to the accuracy or completeness of the information contained herein, and same is submitted subject to errors, omissions, change of price, rental or other conditions, withdrawal without notice, and to any special listing conditions imposed by the property owner(s). As applicable, we make no representation as to the condition of the property (or properties) in question.